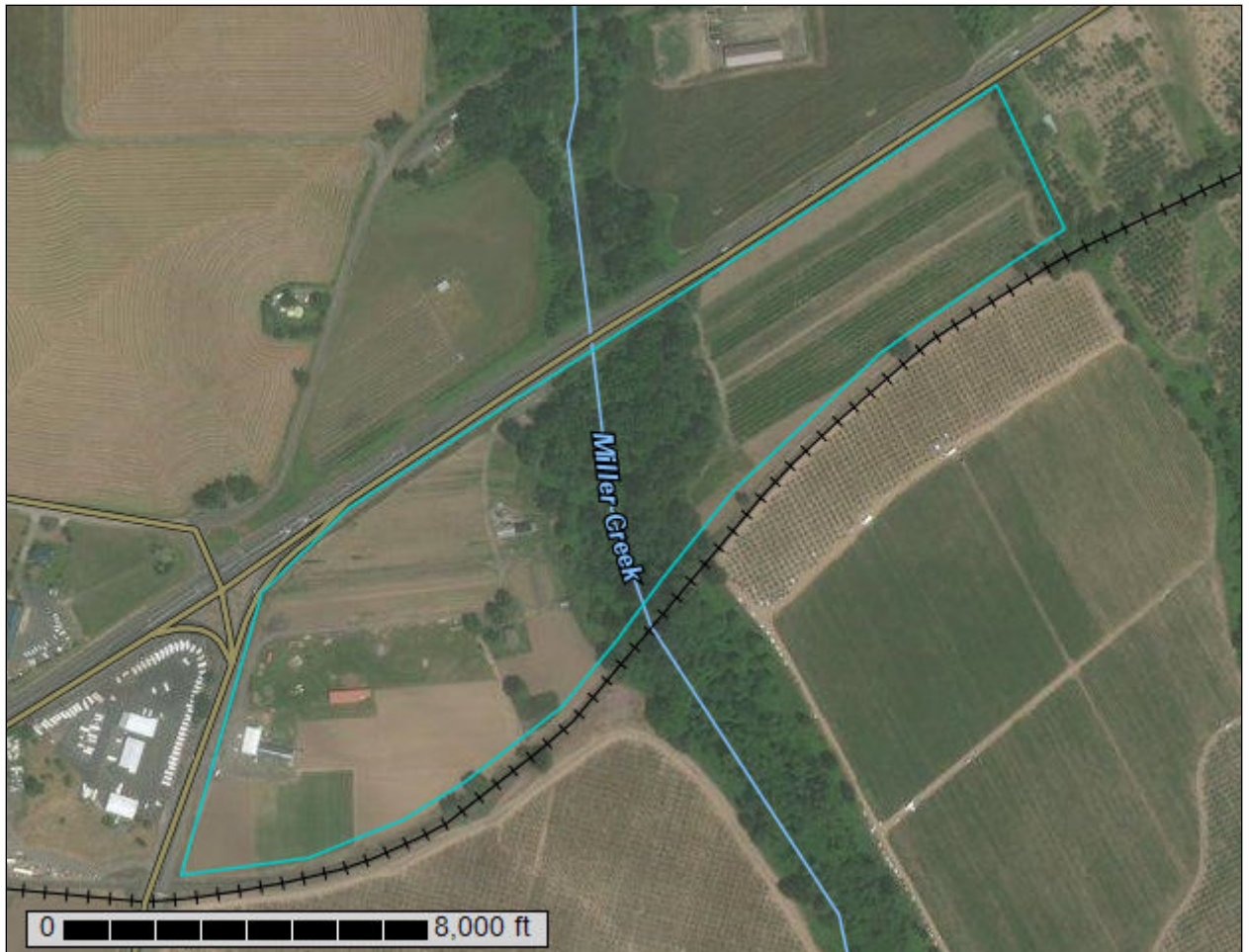


Custom Soil Resource Report for Yamhill County, Oregon



Preface

Soil surveys contain information that affects land use planning in survey areas. They highlight soil limitations that affect various land uses and provide information about the properties of the soils in the survey areas. Soil surveys are designed for many different users, including farmers, ranchers, foresters, agronomists, urban planners, community officials, engineers, developers, builders, and home buyers. Also, conservationists, teachers, students, and specialists in recreation, waste disposal, and pollution control can use the surveys to help them understand, protect, or enhance the environment.

Various land use regulations of Federal, State, and local governments may impose special restrictions on land use or land treatment. Soil surveys identify soil properties that are used in making various land use or land treatment decisions. The information is intended to help the land users identify and reduce the effects of soil limitations on various land uses. The landowner or user is responsible for identifying and complying with existing laws and regulations.

Although soil survey information can be used for general farm, local, and wider area planning, onsite investigation is needed to supplement this information in some cases. Examples include soil quality assessments (<http://www.nrcs.usda.gov/wps/portal/nrcs/main/soils/health/>) and certain conservation and engineering applications. For more detailed information, contact your local USDA Service Center (<https://offices.sc.egov.usda.gov/locator/app?agency=nrcs>) or your NRCS State Soil Scientist (http://www.nrcs.usda.gov/wps/portal/nrcs/detail/soils/contactus/?cid=nrcs142p2_053951).

Great differences in soil properties can occur within short distances. Some soils are seasonally wet or subject to flooding. Some are too unstable to be used as a foundation for buildings or roads. Clayey or wet soils are poorly suited to use as septic tank absorption fields. A high water table makes a soil poorly suited to basements or underground installations.

The National Cooperative Soil Survey is a joint effort of the United States Department of Agriculture and other Federal agencies, State agencies including the Agricultural Experiment Stations, and local agencies. The Natural Resources Conservation Service (NRCS) has leadership for the Federal part of the National Cooperative Soil Survey.

Information about soils is updated periodically. Updated information is available through the NRCS Web Soil Survey, the site for official soil survey information.

The U.S. Department of Agriculture (USDA) prohibits discrimination in all its programs and activities on the basis of race, color, national origin, age, disability, and where applicable, sex, marital status, familial status, parental status, religion, sexual orientation, genetic information, political beliefs, reprisal, or because all or a part of an individual's income is derived from any public assistance program. (Not all prohibited bases apply to all programs.) Persons with disabilities who require

alternative means for communication of program information (Braille, large print, audiotape, etc.) should contact USDA's TARGET Center at (202) 720-2600 (voice and TDD). To file a complaint of discrimination, write to USDA, Director, Office of Civil Rights, 1400 Independence Avenue, S.W., Washington, D.C. 20250-9410 or call (800) 795-3272 (voice) or (202) 720-6382 (TDD). USDA is an equal opportunity provider and employer.

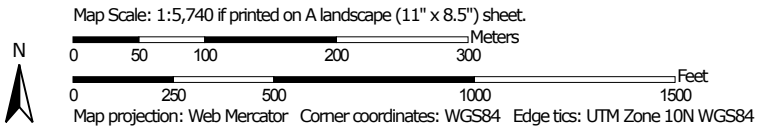
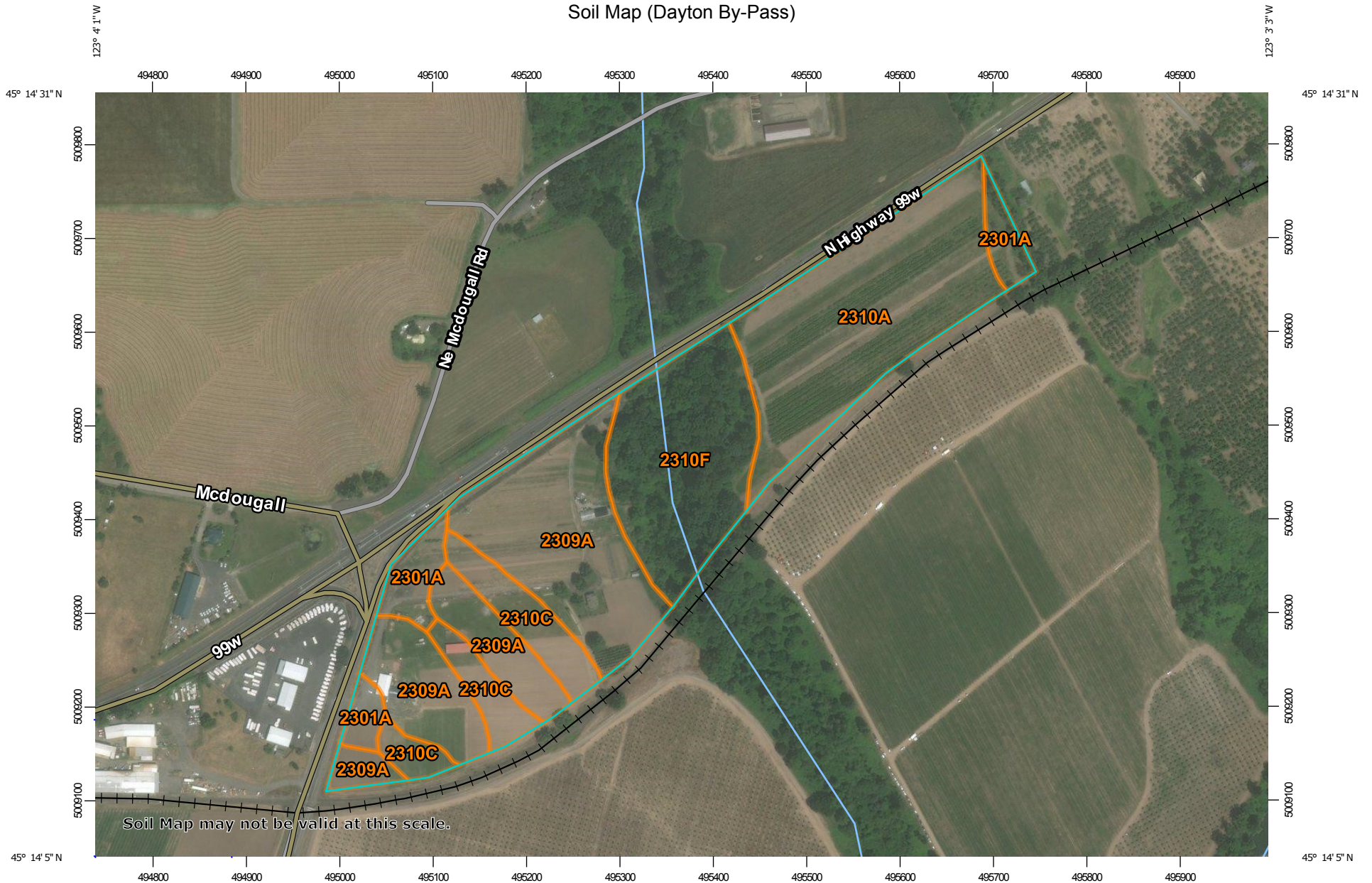
Contents

Preface	2
Soil Map	5
Soil Map (Dayton By-Pass).....	6
Legend.....	7
Map Unit Legend (Dayton By-Pass).....	8
Map Unit Descriptions (Dayton By-Pass).....	8
Yamhill County, Oregon.....	10
2301A—Amity silt loam, 0 to 3 percent slopes.....	10
2309A—Willamette silt loam, 0 to 3 percent slopes.....	11
2310A—Woodburn silt loam, 0 to 3 percent slopes.....	12
2310C—Woodburn silt loam, 3 to 12 percent slopes.....	13
2310F—Woodburn silt loam, 20 to 55 percent slopes.....	14
References	16

Soil Map

The soil map section includes the soil map for the defined area of interest, a list of soil map units on the map and extent of each map unit, and cartographic symbols displayed on the map. Also presented are various metadata about data used to produce the map, and a description of each soil map unit.

Custom Soil Resource Report Soil Map (Dayton By-Pass)



MAP LEGEND

Area of Interest (AOI)

 Area of Interest (AOI)

Soils

 Soil Map Unit Polygons

 Soil Map Unit Lines


 Soil Map Unit Points

Special Point Features

-  Blowout
-  Borrow Pit
-  Clay Spot
-  Closed Depression
-  Gravel Pit
-  Gravelly Spot
-  Landfill
-  Lava Flow
-  Marsh or swamp
-  Mine or Quarry
-  Miscellaneous Water
-  Perennial Water
-  Rock Outcrop
-  Saline Spot
-  Sandy Spot
-  Severely Eroded Spot
-  Sinkhole
-  Slide or Slip
-  Sodic Spot

-  Spoil Area
-  Stony Spot
-  Very Stony Spot
-  Wet Spot
-  Other
-  Special Line Features


Water Features

 Streams and Canals

Transportation

-  Rails
-  Interstate Highways
-  US Routes
-  Major Roads
-  Local Roads

Background

 Aerial Photography

MAP INFORMATION

The soil surveys that comprise your AOI were mapped at 1:24,000.

Warning: Soil Map may not be valid at this scale.

Enlargement of maps beyond the scale of mapping can cause misunderstanding of the detail of mapping and accuracy of soil line placement. The maps do not show the small areas of contrasting soils that could have been shown at a more detailed scale.

Please rely on the bar scale on each map sheet for map measurements.

Source of Map: Natural Resources Conservation Service
 Web Soil Survey URL:
 Coordinate System: Web Mercator (EPSG:3857)

Maps from the Web Soil Survey are based on the Web Mercator projection, which preserves direction and shape but distorts distance and area. A projection that preserves area, such as the Albers equal-area conic projection, should be used if more accurate calculations of distance or area are required.

This product is generated from the USDA-NRCS certified data as of the version date(s) listed below.

Soil Survey Area: Yamhill County, Oregon
 Survey Area Data: Version 4, Sep 16, 2016

Soil map units are labeled (as space allows) for map scales 1:50,000 or larger.

Date(s) aerial images were photographed: Apr 16, 2015—Feb 12, 2017

The orthophoto or other base map on which the soil lines were compiled and digitized probably differs from the background imagery displayed on these maps. As a result, some minor shifting of map unit boundaries may be evident.

Map Unit Legend (Dayton By-Pass)

Yamhill County, Oregon (OR071)			
Map Unit Symbol	Map Unit Name	Acres in AOI	Percent of AOI
2301A	Amity silt loam, 0 to 3 percent slopes	2.7	6.8%
2309A	Willamette silt loam, 0 to 3 percent slopes	14.0	35.0%
2310A	Woodburn silt loam, 0 to 3 percent slopes	11.2	27.8%
2310C	Woodburn silt loam, 3 to 12 percent slopes	4.2	10.4%
2310F	Woodburn silt loam, 20 to 55 percent slopes	8.0	20.1%
Totals for Area of Interest		40.1	100.0%

Map Unit Descriptions (Dayton By-Pass)

The map units delineated on the detailed soil maps in a soil survey represent the soils or miscellaneous areas in the survey area. The map unit descriptions, along with the maps, can be used to determine the composition and properties of a unit.

A map unit delineation on a soil map represents an area dominated by one or more major kinds of soil or miscellaneous areas. A map unit is identified and named according to the taxonomic classification of the dominant soils. Within a taxonomic class there are precisely defined limits for the properties of the soils. On the landscape, however, the soils are natural phenomena, and they have the characteristic variability of all natural phenomena. Thus, the range of some observed properties may extend beyond the limits defined for a taxonomic class. Areas of soils of a single taxonomic class rarely, if ever, can be mapped without including areas of other taxonomic classes. Consequently, every map unit is made up of the soils or miscellaneous areas for which it is named and some minor components that belong to taxonomic classes other than those of the major soils.

Most minor soils have properties similar to those of the dominant soil or soils in the map unit, and thus they do not affect use and management. These are called noncontrasting, or similar, components. They may or may not be mentioned in a particular map unit description. Other minor components, however, have properties and behavioral characteristics divergent enough to affect use or to require different management. These are called contrasting, or dissimilar, components. They generally are in small areas and could not be mapped separately because of the scale used. Some small areas of strongly contrasting soils or miscellaneous areas are identified by a special symbol on the maps. If included in the database for a given area, the contrasting minor components are identified in the map unit descriptions along with some characteristics of each. A few areas of minor components may not have been observed, and consequently they are not mentioned in the descriptions, especially where the pattern was so complex that it

Custom Soil Resource Report

was impractical to make enough observations to identify all the soils and miscellaneous areas on the landscape.

The presence of minor components in a map unit in no way diminishes the usefulness or accuracy of the data. The objective of mapping is not to delineate pure taxonomic classes but rather to separate the landscape into landforms or landform segments that have similar use and management requirements. The delineation of such segments on the map provides sufficient information for the development of resource plans. If intensive use of small areas is planned, however, onsite investigation is needed to define and locate the soils and miscellaneous areas.

An identifying symbol precedes the map unit name in the map unit descriptions. Each description includes general facts about the unit and gives important soil properties and qualities.

Soils that have profiles that are almost alike make up a *soil series*. Except for differences in texture of the surface layer, all the soils of a series have major horizons that are similar in composition, thickness, and arrangement.

Soils of one series can differ in texture of the surface layer, slope, stoniness, salinity, degree of erosion, and other characteristics that affect their use. On the basis of such differences, a soil series is divided into *soil phases*. Most of the areas shown on the detailed soil maps are phases of soil series. The name of a soil phase commonly indicates a feature that affects use or management. For example, Alpha silt loam, 0 to 2 percent slopes, is a phase of the Alpha series.

Some map units are made up of two or more major soils or miscellaneous areas. These map units are complexes, associations, or undifferentiated groups.

A *complex* consists of two or more soils or miscellaneous areas in such an intricate pattern or in such small areas that they cannot be shown separately on the maps. The pattern and proportion of the soils or miscellaneous areas are somewhat similar in all areas. Alpha-Beta complex, 0 to 6 percent slopes, is an example.

An *association* is made up of two or more geographically associated soils or miscellaneous areas that are shown as one unit on the maps. Because of present or anticipated uses of the map units in the survey area, it was not considered practical or necessary to map the soils or miscellaneous areas separately. The pattern and relative proportion of the soils or miscellaneous areas are somewhat similar. Alpha-Beta association, 0 to 2 percent slopes, is an example.

An *undifferentiated group* is made up of two or more soils or miscellaneous areas that could be mapped individually but are mapped as one unit because similar interpretations can be made for use and management. The pattern and proportion of the soils or miscellaneous areas in a mapped area are not uniform. An area can be made up of only one of the major soils or miscellaneous areas, or it can be made up of all of them. Alpha and Beta soils, 0 to 2 percent slopes, is an example.

Some surveys include *miscellaneous areas*. Such areas have little or no soil material and support little or no vegetation. Rock outcrop is an example.

Yamhill County, Oregon

2301A—Amity silt loam, 0 to 3 percent slopes

Map Unit Setting

National map unit symbol: 1j8b1
Elevation: 150 to 400 feet
Mean annual precipitation: 40 to 50 inches
Mean annual air temperature: 50 to 54 degrees F
Frost-free period: 165 to 210 days
Farmland classification: Prime farmland if drained

Map Unit Composition

Amity and similar soils: 96 percent
Minor components: 3 percent
Estimates are based on observations, descriptions, and transects of the mapunit.

Description of Amity

Setting

Landform: Terraces
Landform position (three-dimensional): Tread
Down-slope shape: Linear
Across-slope shape: Linear, concave
Parent material: Silty glaciolacustrine deposits

Typical profile

Ap - 0 to 7 inches: silt loam
A - 7 to 16 inches: silt loam
E - 16 to 22 inches: silt loam
Bt1 - 22 to 28 inches: silty clay loam
Bt2 - 28 to 35 inches: silty clay loam
C - 35 to 72 inches: silt loam

Properties and qualities

Slope: 0 to 3 percent
Depth to restrictive feature: More than 80 inches
Natural drainage class: Somewhat poorly drained
Capacity of the most limiting layer to transmit water (Ksat): Moderately high (0.20 to 0.57 in/hr)
Depth to water table: About 16 to 22 inches
Frequency of flooding: None
Frequency of ponding: None
Available water storage in profile: Very high (about 12.2 inches)

Interpretive groups

Land capability classification (irrigated): 2w
Land capability classification (nonirrigated): 2w
Hydrologic Soil Group: C/D
Other vegetative classification: Somewhat Poorly Drained (G002XY005OR)
Hydric soil rating: No

Minor Components

Dayton

Percent of map unit: 3 percent

Custom Soil Resource Report

Landform: Terraces
Landform position (three-dimensional): Tread
Down-slope shape: Linear
Across-slope shape: Concave
Hydric soil rating: Yes

2309A—Willamette silt loam, 0 to 3 percent slopes

Map Unit Setting

National map unit symbol: 2lkgz
Elevation: 140 to 230 feet
Mean annual precipitation: 40 to 50 inches
Mean annual air temperature: 50 to 54 degrees F
Frost-free period: 165 to 210 days
Farmland classification: All areas are prime farmland

Map Unit Composition

Willamette and similar soils: 96 percent
Minor components: 1 percent
Estimates are based on observations, descriptions, and transects of the mapunit.

Description of Willamette

Setting

Landform: Terraces
Landform position (three-dimensional): Tread
Down-slope shape: Linear
Across-slope shape: Convex, linear
Parent material: Silty glaciolacustrine deposits

Typical profile

Ap - 0 to 6 inches: silt loam
A - 6 to 13 inches: silt loam
AB - 13 to 24 inches: silt loam
BA - 24 to 33 inches: silt loam
2Bt - 33 to 45 inches: silty clay loam
2BCt - 45 to 53 inches: silty clay loam
2C - 53 to 60 inches: silty clay loam

Properties and qualities

Slope: 0 to 3 percent
Depth to restrictive feature: More than 80 inches
Natural drainage class: Well drained
Capacity of the most limiting layer to transmit water (Ksat): Moderately high to high (0.20 to 1.98 in/hr)
Depth to water table: About 45 to 53 inches
Frequency of flooding: None
Frequency of ponding: None
Available water storage in profile: Very high (about 12.2 inches)

Interpretive groups

Land capability classification (irrigated): 1
Land capability classification (nonirrigated): 1
Hydrologic Soil Group: B
Other vegetative classification: Well drained < 15% Slopes (G002XY002OR)
Hydric soil rating: No

Minor Components

Dayton

Percent of map unit: 1 percent
Landform: Terraces
Landform position (three-dimensional): Tread
Down-slope shape: Linear
Across-slope shape: Concave
Hydric soil rating: Yes

2310A—Woodburn silt loam, 0 to 3 percent slopes

Map Unit Setting

National map unit symbol: 1j8b4
Elevation: 100 to 290 feet
Mean annual precipitation: 40 to 50 inches
Mean annual air temperature: 50 to 54 degrees F
Frost-free period: 165 to 210 days
Farmland classification: All areas are prime farmland

Map Unit Composition

Woodburn and similar soils: 93 percent
Minor components: 2 percent
Estimates are based on observations, descriptions, and transects of the mapunit.

Description of Woodburn

Setting

Landform: Terraces
Landform position (three-dimensional): Tread
Down-slope shape: Linear
Across-slope shape: Convex, linear
Parent material: Silty glaciolacustrine deposits

Typical profile

Ap - 0 to 9 inches: silt loam
A - 9 to 17 inches: silt loam
2Bt1 - 17 to 25 inches: silty clay loam
2Bt2 - 25 to 32 inches: silty clay loam
2BCt1 - 32 to 39 inches: silt loam
2BCt2 - 39 to 54 inches: silt loam
2C1 - 54 to 68 inches: silt loam
2C2 - 68 to 80 inches: stratified fine sandy loam to silt loam

Custom Soil Resource Report

3C3 - 80 to 92 inches: stratified fine sandy loam to silt loam

Properties and qualities

Slope: 0 to 3 percent

Depth to restrictive feature: More than 80 inches

Natural drainage class: Moderately well drained

Capacity of the most limiting layer to transmit water (Ksat): Moderately high to high (0.20 to 1.98 in/hr)

Depth to water table: About 25 to 32 inches

Frequency of flooding: None

Frequency of ponding: None

Available water storage in profile: Very high (about 12.2 inches)

Interpretive groups

Land capability classification (irrigated): 1

Land capability classification (nonirrigated): 1

Hydrologic Soil Group: C

Other vegetative classification: Moderately Well Drained < 15% Slopes
(G002XY004OR)

Hydric soil rating: No

Minor Components

Dayton

Percent of map unit: 2 percent

Landform: Terraces

Landform position (three-dimensional): Tread

Down-slope shape: Linear

Across-slope shape: Concave

Hydric soil rating: Yes

2310C—Woodburn silt loam, 3 to 12 percent slopes

Map Unit Setting

National map unit symbol: 1j8b5

Elevation: 100 to 350 feet

Mean annual precipitation: 40 to 50 inches

Mean annual air temperature: 50 to 54 degrees F

Frost-free period: 165 to 210 days

Farmland classification: Farmland of statewide importance

Map Unit Composition

Woodburn and similar soils: 93 percent

Minor components: 2 percent

Estimates are based on observations, descriptions, and transects of the mapunit.

Description of Woodburn

Setting

Landform: Terraces

Landform position (three-dimensional): Tread

Custom Soil Resource Report

Down-slope shape: Convex, linear
Across-slope shape: Linear
Parent material: Silty glaciolacustrine deposits

Typical profile

Ap - 0 to 9 inches: silt loam
A - 9 to 17 inches: silt loam
2Bt1 - 17 to 25 inches: silty clay loam
2Bt2 - 25 to 32 inches: silty clay loam
2BCt1 - 32 to 39 inches: silt loam
2BCt2 - 39 to 54 inches: silt loam
2C1 - 54 to 68 inches: silt loam
2C2 - 68 to 80 inches: stratified fine sandy loam to silt loam
3C3 - 80 to 92 inches: stratified fine sandy loam to silt loam

Properties and qualities

Slope: 3 to 12 percent
Depth to restrictive feature: More than 80 inches
Natural drainage class: Moderately well drained
Capacity of the most limiting layer to transmit water (Ksat): Moderately high to high (0.20 to 1.98 in/hr)
Depth to water table: About 25 to 32 inches
Frequency of flooding: None
Frequency of ponding: None
Available water storage in profile: Very high (about 12.2 inches)

Interpretive groups

Land capability classification (irrigated): 4e
Land capability classification (nonirrigated): 2e
Hydrologic Soil Group: C
Other vegetative classification: Moderately Well Drained < 15% Slopes (G002XY004OR)
Hydric soil rating: No

Minor Components

Dayton

Percent of map unit: 2 percent
Landform: Terraces
Landform position (three-dimensional): Tread
Down-slope shape: Linear
Across-slope shape: Concave
Hydric soil rating: Yes

2310F—Woodburn silt loam, 20 to 55 percent slopes

Map Unit Setting

National map unit symbol: 1j8b7
Elevation: 100 to 400 feet
Mean annual precipitation: 40 to 50 inches
Mean annual air temperature: 50 to 54 degrees F

Custom Soil Resource Report

Frost-free period: 165 to 210 days

Farmland classification: Not prime farmland

Map Unit Composition

Woodburn and similar soils: 100 percent

Estimates are based on observations, descriptions, and transects of the mapunit.

Description of Woodburn

Setting

Landform: Terraces

Landform position (three-dimensional): Tread

Down-slope shape: Convex

Across-slope shape: Linear

Parent material: Silty glaciolacustrine deposits

Typical profile

Ap - 0 to 9 inches: silt loam

A - 9 to 17 inches: silt loam

2Bt1 - 17 to 25 inches: silty clay loam

2Bt2 - 25 to 32 inches: silty clay loam

2BCt1 - 32 to 39 inches: silt loam

2BCt2 - 39 to 54 inches: silt loam

2C1 - 54 to 68 inches: silt loam

2C2 - 68 to 80 inches: stratified fine sandy loam to silt loam

3C3 - 80 to 92 inches: stratified fine sandy loam to silt loam

Properties and qualities

Slope: 20 to 55 percent

Depth to restrictive feature: More than 80 inches

Natural drainage class: Moderately well drained

Capacity of the most limiting layer to transmit water (Ksat): Moderately high to high (0.20 to 1.98 in/hr)

Depth to water table: About 25 to 32 inches

Frequency of flooding: None

Frequency of ponding: None

Available water storage in profile: Very high (about 12.2 inches)

Interpretive groups

Land capability classification (irrigated): None specified

Land capability classification (nonirrigated): 6e

Hydrologic Soil Group: C

Hydric soil rating: No

References

- American Association of State Highway and Transportation Officials (AASHTO). 2004. Standard specifications for transportation materials and methods of sampling and testing. 24th edition.
- American Society for Testing and Materials (ASTM). 2005. Standard classification of soils for engineering purposes. ASTM Standard D2487-00.
- Cowardin, L.M., V. Carter, F.C. Golet, and E.T. LaRoe. 1979. Classification of wetlands and deep-water habitats of the United States. U.S. Fish and Wildlife Service FWS/OBS-79/31.
- Federal Register. July 13, 1994. Changes in hydric soils of the United States.
- Federal Register. September 18, 2002. Hydric soils of the United States.
- Hurt, G.W., and L.M. Vasilas, editors. Version 6.0, 2006. Field indicators of hydric soils in the United States.
- National Research Council. 1995. Wetlands: Characteristics and boundaries.
- Soil Survey Division Staff. 1993. Soil survey manual. Soil Conservation Service. U.S. Department of Agriculture Handbook 18. http://www.nrcs.usda.gov/wps/portal/nrcs/detail/national/soils/?cid=nrcs142p2_054262
- Soil Survey Staff. 1999. Soil taxonomy: A basic system of soil classification for making and interpreting soil surveys. 2nd edition. Natural Resources Conservation Service, U.S. Department of Agriculture Handbook 436. http://www.nrcs.usda.gov/wps/portal/nrcs/detail/national/soils/?cid=nrcs142p2_053577
- Soil Survey Staff. 2010. Keys to soil taxonomy. 11th edition. U.S. Department of Agriculture, Natural Resources Conservation Service. http://www.nrcs.usda.gov/wps/portal/nrcs/detail/national/soils/?cid=nrcs142p2_053580
- Tiner, R.W., Jr. 1985. Wetlands of Delaware. U.S. Fish and Wildlife Service and Delaware Department of Natural Resources and Environmental Control, Wetlands Section.
- United States Army Corps of Engineers, Environmental Laboratory. 1987. Corps of Engineers wetlands delineation manual. Waterways Experiment Station Technical Report Y-87-1.
- United States Department of Agriculture, Natural Resources Conservation Service. National forestry manual. http://www.nrcs.usda.gov/wps/portal/nrcs/detail/soils/home/?cid=nrcs142p2_053374
- United States Department of Agriculture, Natural Resources Conservation Service. National range and pasture handbook. <http://www.nrcs.usda.gov/wps/portal/nrcs/detail/national/landuse/rangepasture/?cid=stelprdb1043084>

Custom Soil Resource Report

United States Department of Agriculture, Natural Resources Conservation Service. National soil survey handbook, title 430-VI. http://www.nrcs.usda.gov/wps/portal/nrcs/detail/soils/scientists/?cid=nrcs142p2_054242

United States Department of Agriculture, Natural Resources Conservation Service. 2006. Land resource regions and major land resource areas of the United States, the Caribbean, and the Pacific Basin. U.S. Department of Agriculture Handbook 296. http://www.nrcs.usda.gov/wps/portal/nrcs/detail/national/soils/?cid=nrcs142p2_053624

United States Department of Agriculture, Soil Conservation Service. 1961. Land capability classification. U.S. Department of Agriculture Handbook 210. http://www.nrcs.usda.gov/Internet/FSE_DOCUMENTS/nrcs142p2_052290.pdf