

Spectacular Silverton Oregon Estate

144 Acres - Private - Frontage on Silver Creek



\$2,000,000.

144 Acres on Beautiful Silver Creek

16533 Lewis Cemetery Rd.
Silverton, OR 97381



- Distinctive Craftsman Home with Many Luxuries
 - 4 Bedrooms, 3.5 Bathrooms, 4700+ SF
 - Dramatic Vaulted Ceilings
 - Hardwood Floors and Custom Cabinetry
 - Granite and Tile
 - Spacious Decks and Outdoor Kitchen
 - Oversized 5-car Garage
 - Cedar and Stone Exterior
- Privacy - Fenced with Gated Entry
- Outdoor Saline Pool and Poolhouse
- Secluded Pond with Island Sauna
- Large Indoor Arena and 5-stall horse barn with tack and wash rooms; Separate covered round pen
- Fenced pastures for horses or cattle
- Large shop with RV parking
- Extensive Timber
- Fenced garden with raised beds & chicken coop
- Marion County: TL 300, 400, 1000, 1100, 1500, Sec. 29, T7S, R1E, W.M. Annual Taxes: \$8,293.00
- RMLS #13293909

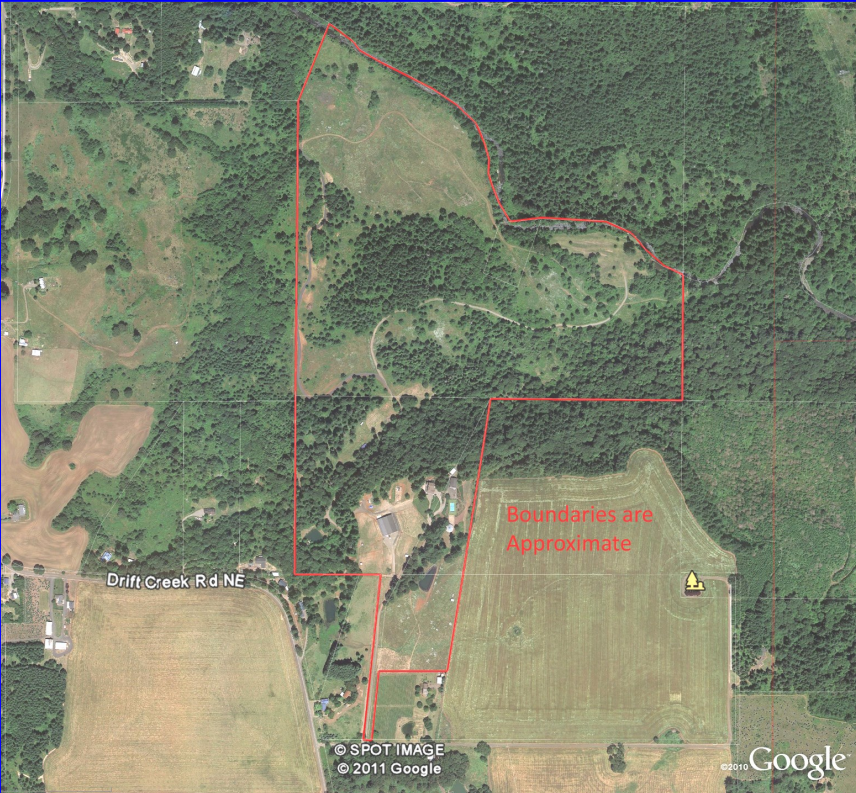


Eugene B. Wolf, Broker
(503) 682-1789 (Office)
(503) 704-5262 (Cellular)
www.wolfnw.com

WOLF NW Properties, Inc.
30003 SW 35th Dr. Wilsonville, Oregon 97070

Information Contained Herein from Sources Deemed
Reliable, But Not Guaranteed

Silverton Oregon Estate



Eugene B. Wolf, Broker
(503) 682-1789 (Office)
(503) 704-5262 (Cellular)
www.wolfnw.com

WOLF NW Properties, Inc.
30003 SW 35th Dr. Wilsonville, Oregon 97070

