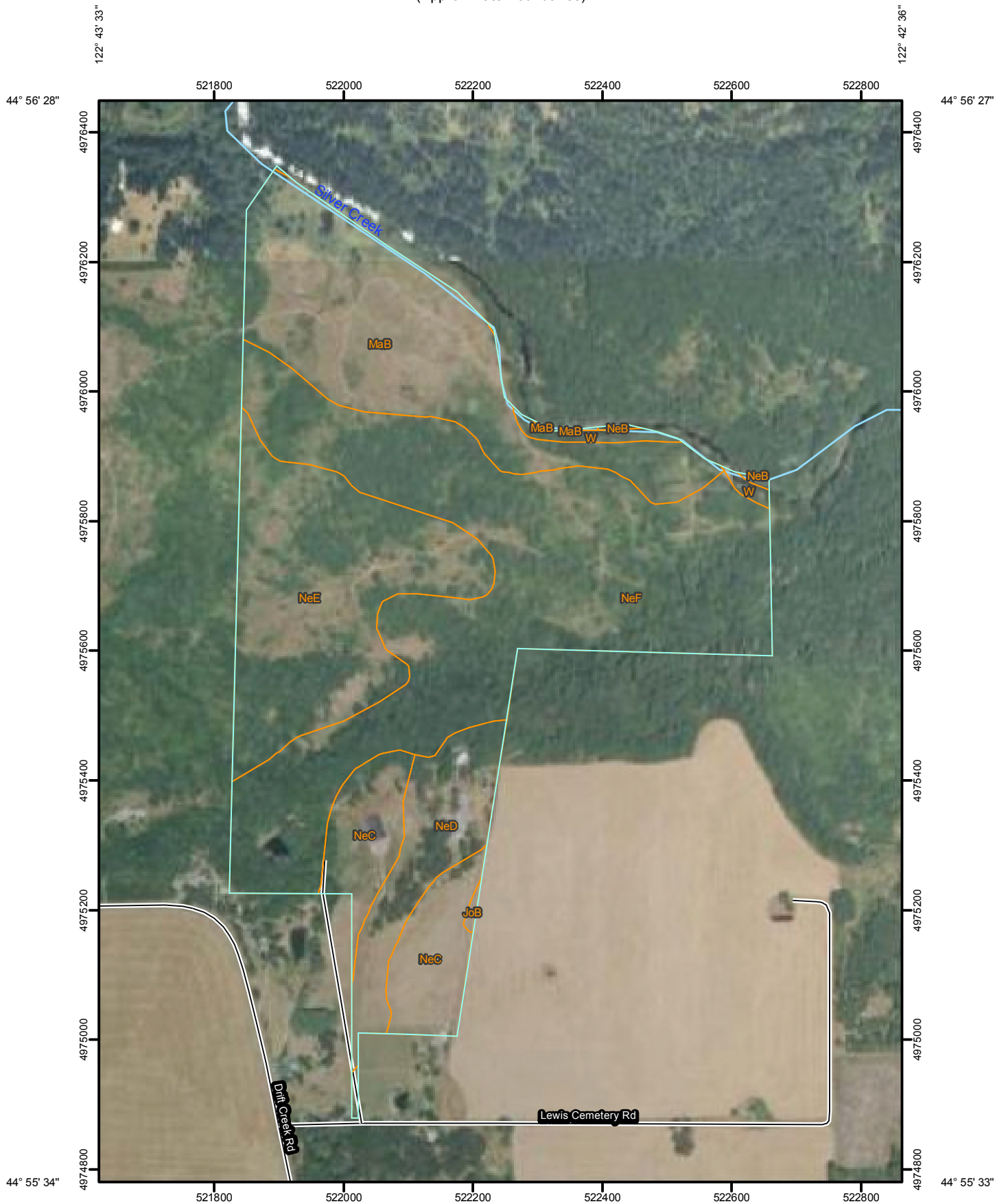
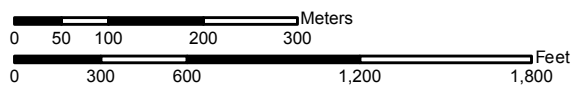


Soil Map—Marion County Area, Oregon
(Approximate Boundaries)



Map Scale: 1:7,960 if printed on A size (8.5" x 11") sheet.



Map Unit Legend

Marion County Area, Oregon (OR643)			
Map Unit Symbol	Map Unit Name	Acres in AOI	Percent of AOI
JoB	Jory silty clay loam, 2 to 7 percent slopes	0.2	0.1%
MaB	McAlpin silty clay loam, 3 to 6 percent slopes	29.9	20.6%
NeB	Nekia silty clay loam, 2 to 7 percent slopes	0.2	0.2%
NeC	Nekia silty clay loam, 7 to 12 percent slopes	13.0	9.0%
NeD	Nekia silty clay loam, 12 to 20 percent slopes	10.7	7.4%
NeE	Nekia silty clay loam, 20 to 30 percent slopes	28.8	19.9%
NeF	Nekia silty clay loam, 30 to 50 percent slopes	60.7	41.8%
W	Water	1.6	1.1%
Totals for Area of Interest		145.1	100.0%