

6.75 Acres Stanfield Commercial Land

1/4 mile North of Interstate-84 at Stanfield Exit #188



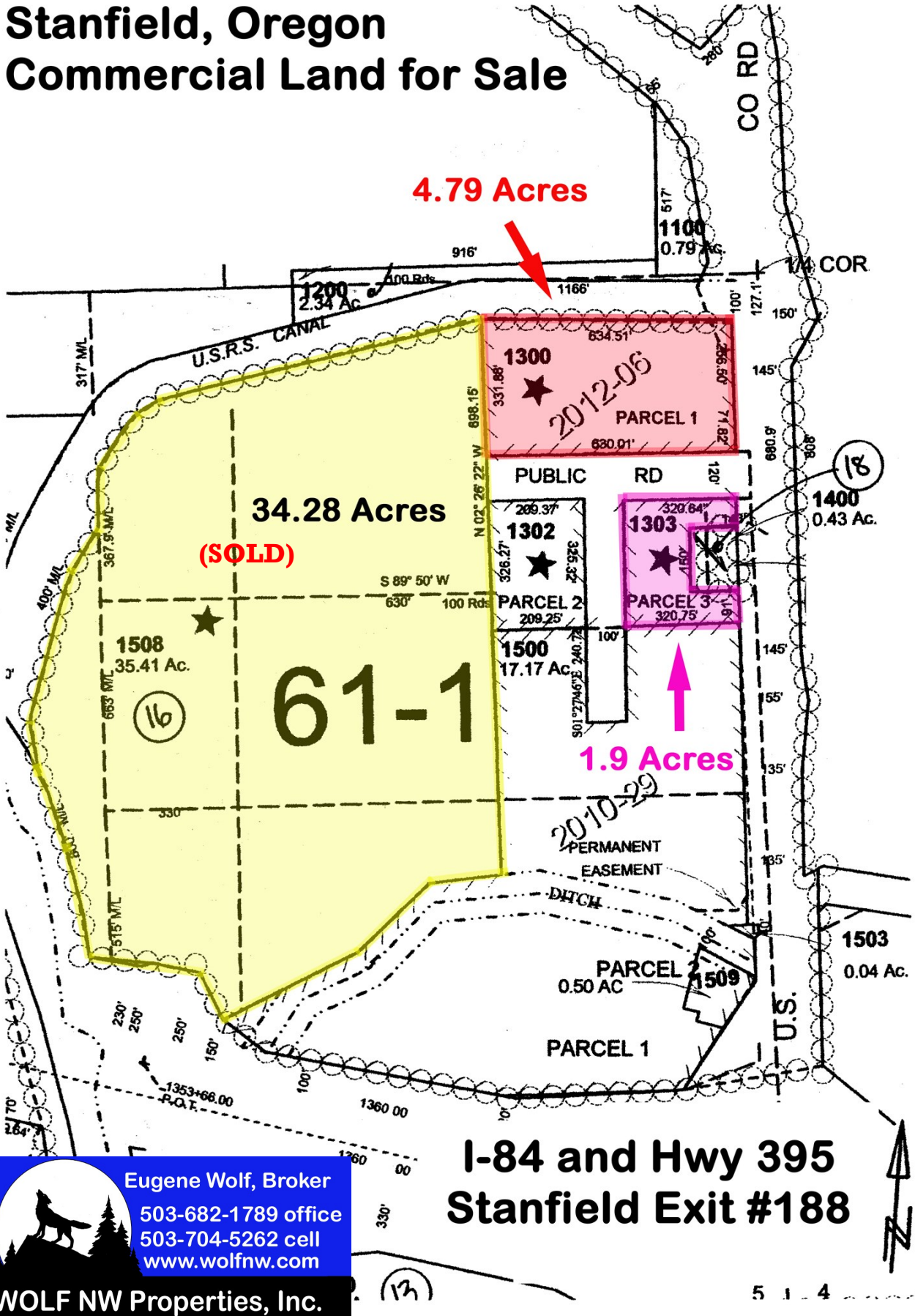
\$500,000.

- Offered in 2 Separate Parcels:
 - 1.96 Acres Zoned Tourist Commercial - \$150,000.
 - 4.79 Acres Zoned Tourist Commercial - \$350,000.
- Inside UGB and City Limits of Stanfield
- New Paved Access Road
- Level, Usable Land
- Water, Gas, Sewer, Power, and Fiber Optic Available
- Umatilla County
- Adjacent to Pilot Travel Center
- 188 miles East of Portland, 23 miles West of Pendleton
- RMLS #12218204 and #12329089

Eugene B. Wolf, Broker
(503) 682-1789 (Office)
(503) 704-5262 (Cellular)
www.wolfnw.com

WOLF NW Properties, Inc.
30003 SW 35th Dr. Wilsonville, Oregon 97070

Stanfield, Oregon Commercial Land for Sale



4.79 Acres

**34.28 Acres
(SOLD)**

1.9 Acres

**I-84 and Hwy 395
Stanfield Exit #188**


Eugene Wolf, Broker
 503-682-1789 office
 503-704-5262 cell
www.wolfnw.com
WOLF NW Properties, Inc.