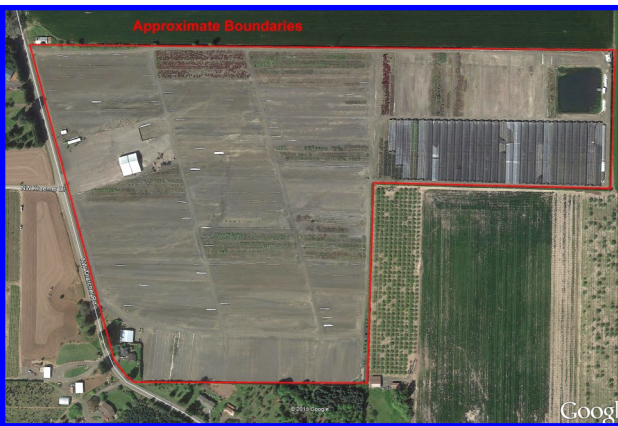


57.52 ACRE THATCHER FARM

4352 NW THATCHER RD. FOREST GROVE, OR 97116



The Thatcher Farm is a move-in ready 57 Acre Graveled and Irrigated Container Yard Nursery property in Forest Grove, Oregon. There are extensive water rights from an irrigation well and the Tualatin Valley Irrigation District. There is an in-ground irrigation water delivery system, and a recirculation system that serves to reclaim and reuse irrigation water stored in the large reservoir. There are approximately 30 large hoop greenhouses and a warehouse/potting shed. In addition, the loading dock, spacious paved yard area, equipment shop, and gated entry add to the versatility of this farm. The 3-bedroom home built in approximately 1934 is rented. The nursery stock has been removed, and this picturesque Washington County farm is ready to start production immediately, essentially a turn-key operation. Additional acreage and equipment also available—
\$925,000

Information from sources deemed reliable but not guaranteed



Eugene Wolf, Broker
503-682-1789 office
503-704-5262 cell
www.wolfnw.com

WOLF NW Properties, Inc.