

129 +/- Acres with Home & Irrigation

Frontage on I-5 near Donald/Aurora Exit #278



12704 NE Ehlen Road, Aurora OR 97002

\$1,885,000.

- 129 +/- Acres Willamette Valley Farmland
- Frontage on I-5 between Portland and Salem
- Access near Donald/Aurora Exit # 278
- 4 Bedroom, 1.5 Bath Home
- Irrigation Well and Extensive Water Rights
- Primarily Class II Amity Soil per NRCS
- Barn, Machine Shed and Loading Dock
- Grass Seed & Christmas Tree Ground Leased through 2018
- Senecal Creek and Timber on Property
- TL 200 & 300, Sec. 16 & part of TL 400, Sec. 15, T4S, R1W, W.M. (Sale subject to final recording of Partition Plat)
- RMLS #16666291
- (2) Additional Adjacent 10-acre parcels available—
Listing subject to prior sale of entire 149 acres



Eugene Wolf, Principal Broker

503-682-1789 office

503-704-5262 cell

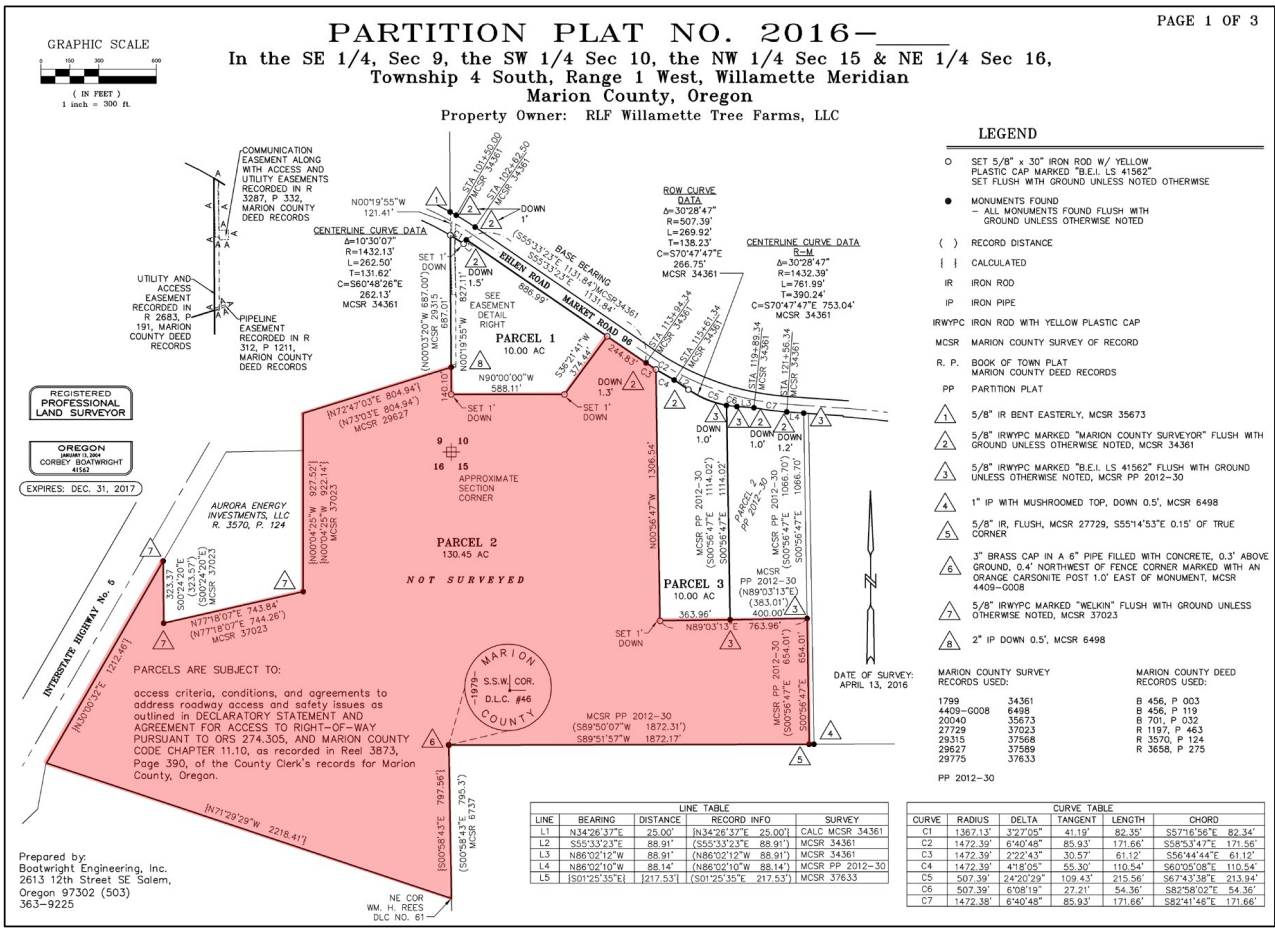
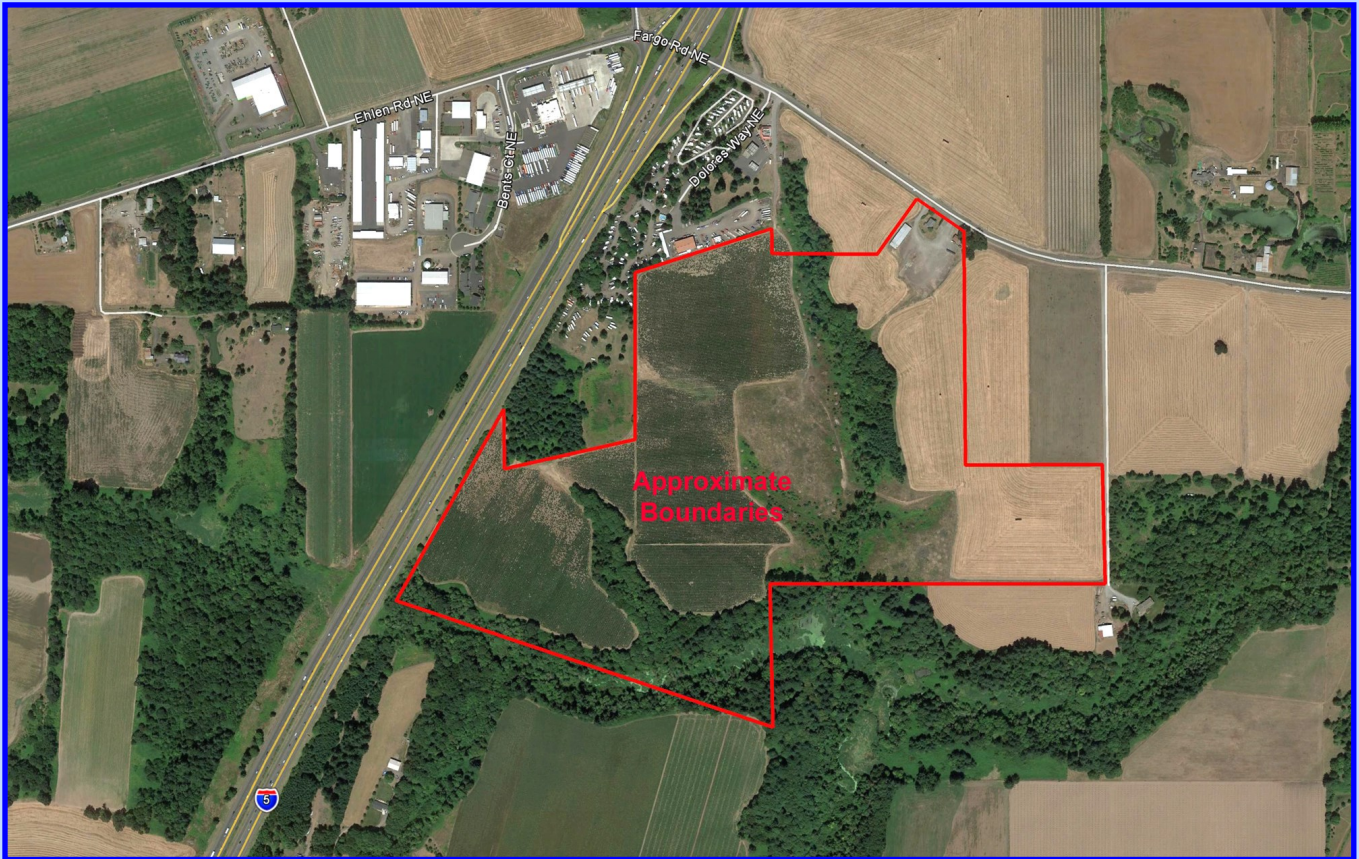
www.wolfnw.com

WOLF NW Properties, Inc.

Information Contained Herein from Sources Deemed Reliable, But Not Guaranteed

129 +/- Acres with Home & Irrigation

Frontage on I-5 near Donald/Aurora Exit #278



Prepared by:
Boatwright Engineering, Inc.
2613 12th Street SE Salem,
Oregon 97302 (503)
363-9225