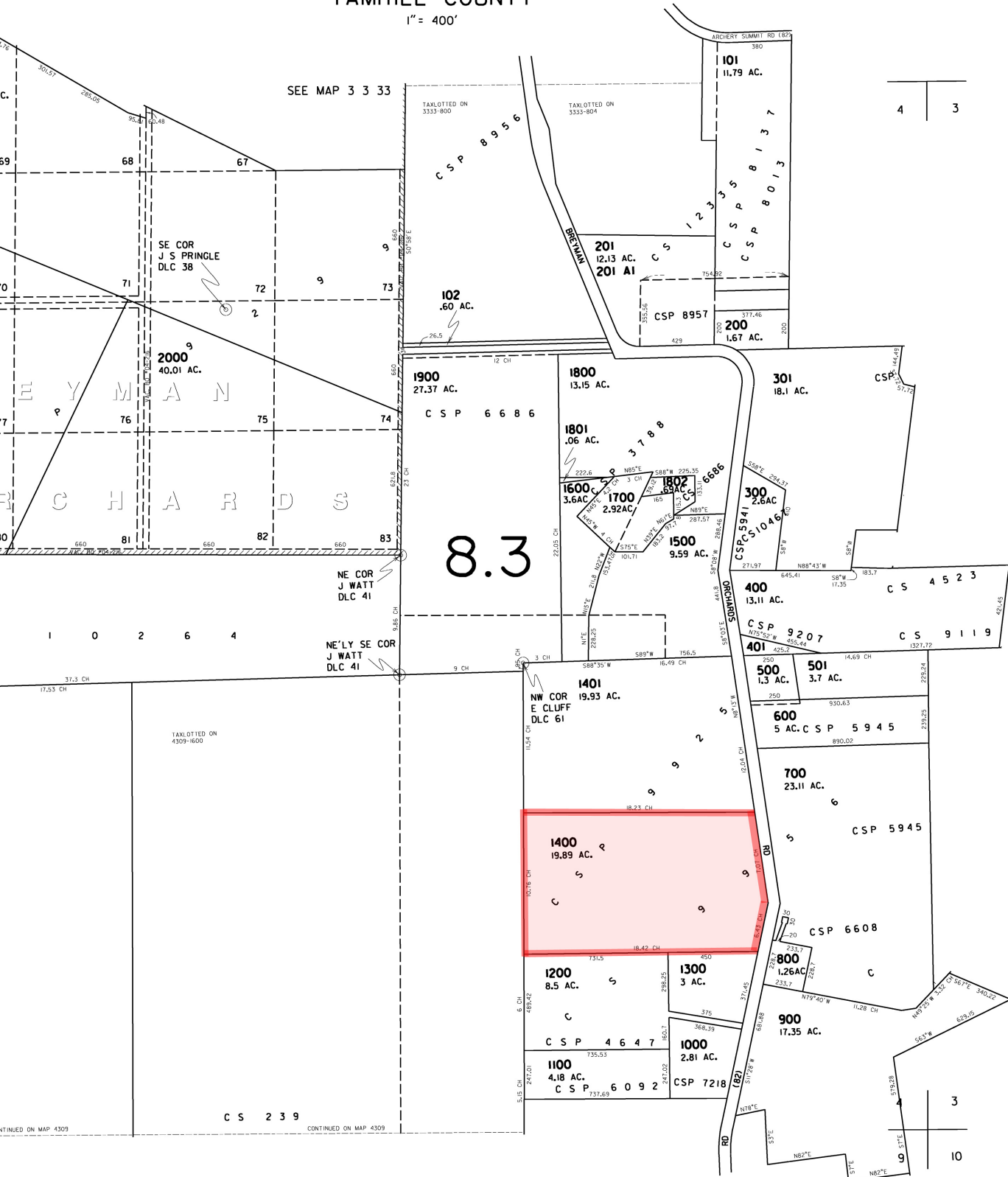


SECTION 4 T4S R3W W.M.
YAMHILL COUNTY

1" = 400'



- CANCELLED
- 100 REF
- 103 REF
- 202 REF
- 701 REF
- 2200 REF
- 2300 REF
- 2400 REF

SEE MAP 4 3 03

CONTINUED ON MAP 4309

C S 2 3 9

CONTINUED ON MAP 4309

SEE MAP 4 3 09