



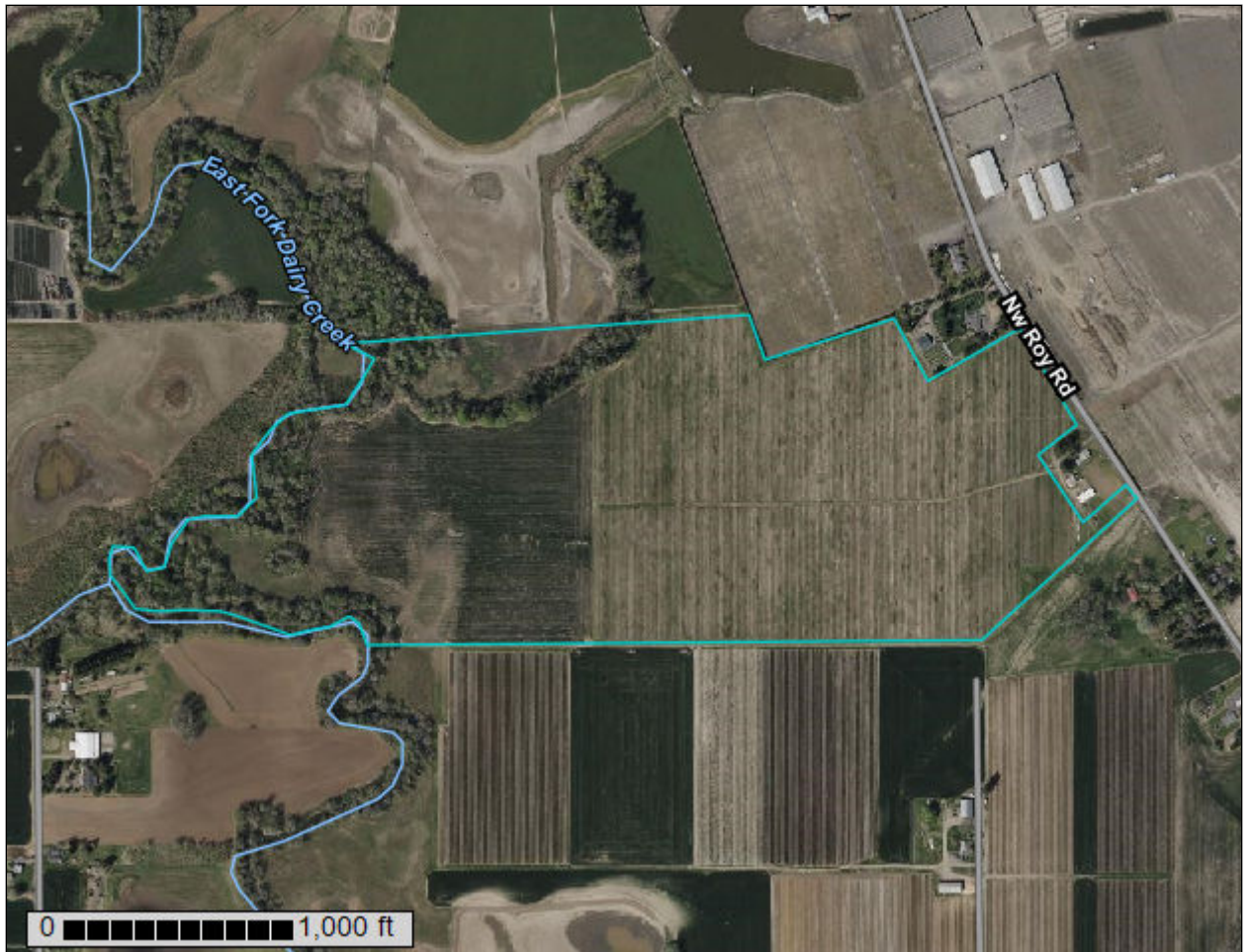
United States
Department of
Agriculture

NRCS

Natural
Resources
Conservation
Service

A product of the National
Cooperative Soil Survey,
a joint effort of the United
States Department of
Agriculture and other
Federal agencies, State
agencies including the
Agricultural Experiment
Stations, and local
participants

Custom Soil Resource Report for **Washington County, Oregon**



Preface

Soil surveys contain information that affects land use planning in survey areas. They highlight soil limitations that affect various land uses and provide information about the properties of the soils in the survey areas. Soil surveys are designed for many different users, including farmers, ranchers, foresters, agronomists, urban planners, community officials, engineers, developers, builders, and home buyers. Also, conservationists, teachers, students, and specialists in recreation, waste disposal, and pollution control can use the surveys to help them understand, protect, or enhance the environment.

Various land use regulations of Federal, State, and local governments may impose special restrictions on land use or land treatment. Soil surveys identify soil properties that are used in making various land use or land treatment decisions. The information is intended to help the land users identify and reduce the effects of soil limitations on various land uses. The landowner or user is responsible for identifying and complying with existing laws and regulations.

Although soil survey information can be used for general farm, local, and wider area planning, onsite investigation is needed to supplement this information in some cases. Examples include soil quality assessments (<http://www.nrcs.usda.gov/wps/portal/nrcs/main/soils/health/>) and certain conservation and engineering applications. For more detailed information, contact your local USDA Service Center (<https://offices.sc.egov.usda.gov/locator/app?agency=nrcs>) or your NRCS State Soil Scientist (http://www.nrcs.usda.gov/wps/portal/nrcs/detail/soils/contactus/?cid=nrcs142p2_053951).

Great differences in soil properties can occur within short distances. Some soils are seasonally wet or subject to flooding. Some are too unstable to be used as a foundation for buildings or roads. Clayey or wet soils are poorly suited to use as septic tank absorption fields. A high water table makes a soil poorly suited to basements or underground installations.

The National Cooperative Soil Survey is a joint effort of the United States Department of Agriculture and other Federal agencies, State agencies including the Agricultural Experiment Stations, and local agencies. The Natural Resources Conservation Service (NRCS) has leadership for the Federal part of the National Cooperative Soil Survey.

Information about soils is updated periodically. Updated information is available through the NRCS Web Soil Survey, the site for official soil survey information.

The U.S. Department of Agriculture (USDA) prohibits discrimination in all its programs and activities on the basis of race, color, national origin, age, disability, and where applicable, sex, marital status, familial status, parental status, religion, sexual orientation, genetic information, political beliefs, reprisal, or because all or a part of an individual's income is derived from any public assistance program. (Not all prohibited bases apply to all programs.) Persons with disabilities who require

alternative means for communication of program information (Braille, large print, audiotape, etc.) should contact USDA's TARGET Center at (202) 720-2600 (voice and TDD). To file a complaint of discrimination, write to USDA, Director, Office of Civil Rights, 1400 Independence Avenue, S.W., Washington, D.C. 20250-9410 or call (800) 795-3272 (voice) or (202) 720-6382 (TDD). USDA is an equal opportunity provider and employer.

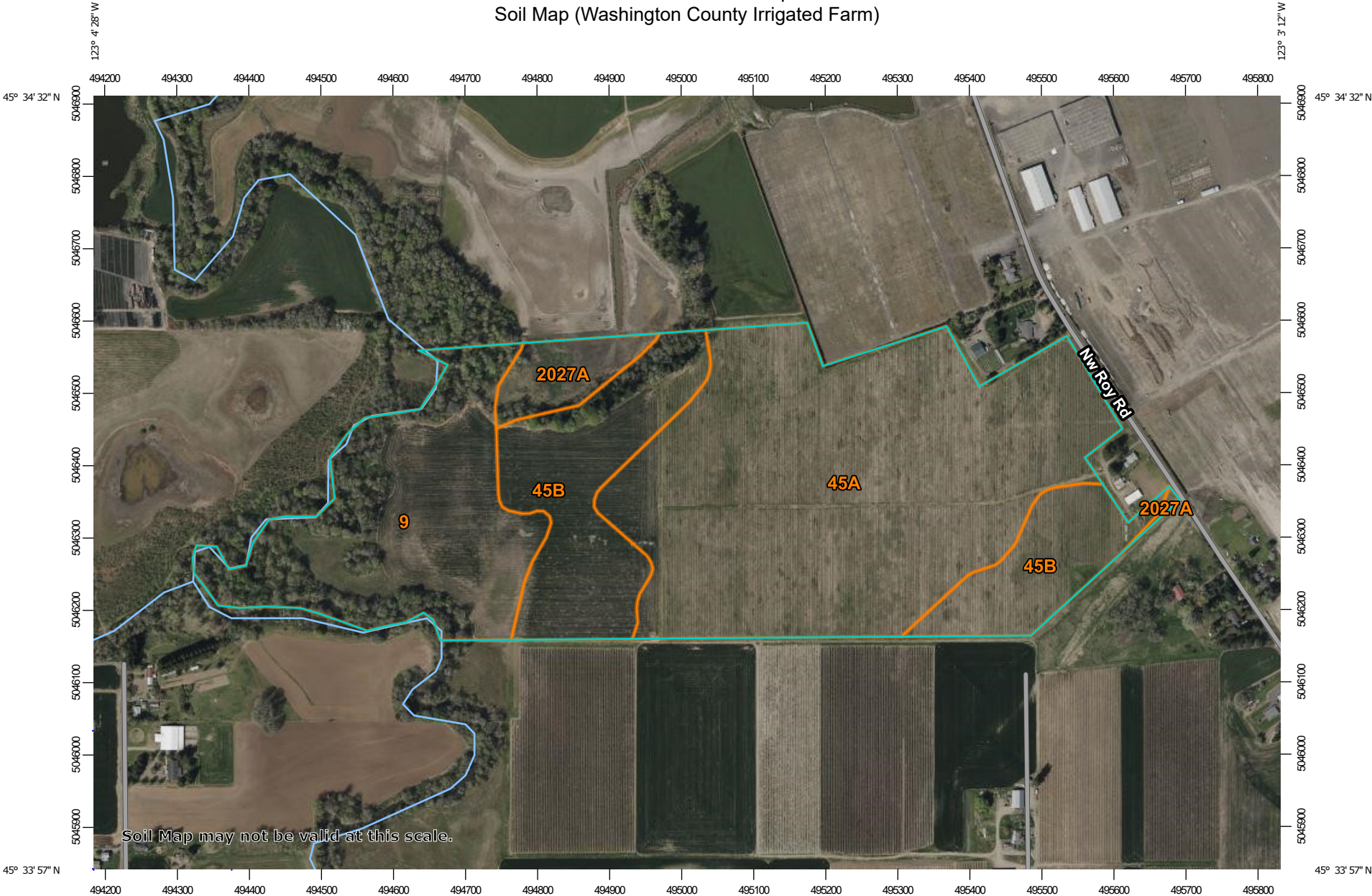
Contents

Preface	2
Soil Map	5
Soil Map (Washington County Irrigated Farm).....	6
Legend.....	7
Map Unit Legend (Washington County Irrigated Farm).....	8
Map Unit Descriptions (Washington County Irrigated Farm).....	8
Washington County, Oregon.....	10
9—Chehalis silty clay loam, occasional overflow.....	10
45A—Woodburn silt loam, 0 to 3 percent slopes.....	11
45B—Woodburn silt loam, 3 to 7 percent slopes.....	12
2027A—Verboort silty clay loam, 0 to 3 percent slopes.....	13

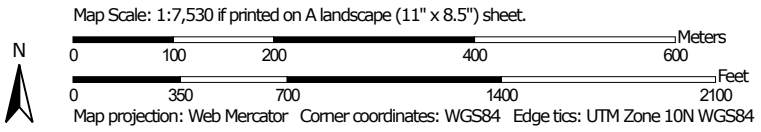
Soil Map

The soil map section includes the soil map for the defined area of interest, a list of soil map units on the map and extent of each map unit, and cartographic symbols displayed on the map. Also presented are various metadata about data used to produce the map, and a description of each soil map unit.

Custom Soil Resource Report Soil Map (Washington County Irrigated Farm)



Soil Map may not be valid at this scale.



MAP LEGEND

Area of Interest (AOI)

 Area of Interest (AOI)

Soils

 Soil Map Unit Polygons

 Soil Map Unit Lines


 Soil Map Unit Points

Special Point Features

-  Blowout
-  Borrow Pit
-  Clay Spot
-  Closed Depression
-  Gravel Pit
-  Gravelly Spot
-  Landfill
-  Lava Flow
-  Marsh or swamp
-  Mine or Quarry
-  Miscellaneous Water
-  Perennial Water
-  Rock Outcrop
-  Saline Spot
-  Sandy Spot
-  Severely Eroded Spot
-  Sinkhole
-  Slide or Slip
-  Sodic Spot

-  Spoil Area
-  Stony Spot
-  Very Stony Spot
-  Wet Spot
-  Other
-  Special Line Features

Water Features

 Streams and Canals

Transportation

-  Rails
-  Interstate Highways
-  US Routes
-  Major Roads
-  Local Roads

Background

 Aerial Photography

MAP INFORMATION

The soil surveys that comprise your AOI were mapped at 1:20,000.

Warning: Soil Map may not be valid at this scale.

Enlargement of maps beyond the scale of mapping can cause misunderstanding of the detail of mapping and accuracy of soil line placement. The maps do not show the small areas of contrasting soils that could have been shown at a more detailed scale.

Please rely on the bar scale on each map sheet for map measurements.

Source of Map: Natural Resources Conservation Service
 Web Soil Survey URL:
 Coordinate System: Web Mercator (EPSG:3857)

Maps from the Web Soil Survey are based on the Web Mercator projection, which preserves direction and shape but distorts distance and area. A projection that preserves area, such as the Albers equal-area conic projection, should be used if more accurate calculations of distance or area are required.

This product is generated from the USDA-NRCS certified data as of the version date(s) listed below.

Soil Survey Area: Washington County, Oregon
 Survey Area Data: Version 21, Oct 27, 2021

Soil map units are labeled (as space allows) for map scales 1:50,000 or larger.

Date(s) aerial images were photographed: Apr 16, 2021—Apr 18, 2021

The orthophoto or other base map on which the soil lines were compiled and digitized probably differs from the background imagery displayed on these maps. As a result, some minor shifting of map unit boundaries may be evident.

Map Unit Legend (Washington County Irrigated Farm)

Map Unit Symbol	Map Unit Name	Acres in AOI	Percent of AOI
9	Chehalis silty clay loam, occasional overflow	25.6	23.7%
45A	Woodburn silt loam, 0 to 3 percent slopes	54.4	50.3%
45B	Woodburn silt loam, 3 to 7 percent slopes	24.1	22.2%
2027A	Verboort silty clay loam, 0 to 3 percent slopes	4.1	3.8%
Totals for Area of Interest		108.2	100.0%

Map Unit Descriptions (Washington County Irrigated Farm)

The map units delineated on the detailed soil maps in a soil survey represent the soils or miscellaneous areas in the survey area. The map unit descriptions, along with the maps, can be used to determine the composition and properties of a unit.

A map unit delineation on a soil map represents an area dominated by one or more major kinds of soil or miscellaneous areas. A map unit is identified and named according to the taxonomic classification of the dominant soils. Within a taxonomic class there are precisely defined limits for the properties of the soils. On the landscape, however, the soils are natural phenomena, and they have the characteristic variability of all natural phenomena. Thus, the range of some observed properties may extend beyond the limits defined for a taxonomic class. Areas of soils of a single taxonomic class rarely, if ever, can be mapped without including areas of other taxonomic classes. Consequently, every map unit is made up of the soils or miscellaneous areas for which it is named and some minor components that belong to taxonomic classes other than those of the major soils.

Most minor soils have properties similar to those of the dominant soil or soils in the map unit, and thus they do not affect use and management. These are called noncontrasting, or similar, components. They may or may not be mentioned in a particular map unit description. Other minor components, however, have properties and behavioral characteristics divergent enough to affect use or to require different management. These are called contrasting, or dissimilar, components. They generally are in small areas and could not be mapped separately because of the scale used. Some small areas of strongly contrasting soils or miscellaneous areas are identified by a special symbol on the maps. If included in the database for a given area, the contrasting minor components are identified in the map unit descriptions along with some characteristics of each. A few areas of minor components may not have been observed, and consequently they are not mentioned in the descriptions, especially where the pattern was so complex that it

Custom Soil Resource Report

was impractical to make enough observations to identify all the soils and miscellaneous areas on the landscape.

The presence of minor components in a map unit in no way diminishes the usefulness or accuracy of the data. The objective of mapping is not to delineate pure taxonomic classes but rather to separate the landscape into landforms or landform segments that have similar use and management requirements. The delineation of such segments on the map provides sufficient information for the development of resource plans. If intensive use of small areas is planned, however, onsite investigation is needed to define and locate the soils and miscellaneous areas.

An identifying symbol precedes the map unit name in the map unit descriptions. Each description includes general facts about the unit and gives important soil properties and qualities.

Soils that have profiles that are almost alike make up a *soil series*. Except for differences in texture of the surface layer, all the soils of a series have major horizons that are similar in composition, thickness, and arrangement.

Soils of one series can differ in texture of the surface layer, slope, stoniness, salinity, degree of erosion, and other characteristics that affect their use. On the basis of such differences, a soil series is divided into *soil phases*. Most of the areas shown on the detailed soil maps are phases of soil series. The name of a soil phase commonly indicates a feature that affects use or management. For example, Alpha silt loam, 0 to 2 percent slopes, is a phase of the Alpha series.

Some map units are made up of two or more major soils or miscellaneous areas. These map units are complexes, associations, or undifferentiated groups.

A *complex* consists of two or more soils or miscellaneous areas in such an intricate pattern or in such small areas that they cannot be shown separately on the maps. The pattern and proportion of the soils or miscellaneous areas are somewhat similar in all areas. Alpha-Beta complex, 0 to 6 percent slopes, is an example.

An *association* is made up of two or more geographically associated soils or miscellaneous areas that are shown as one unit on the maps. Because of present or anticipated uses of the map units in the survey area, it was not considered practical or necessary to map the soils or miscellaneous areas separately. The pattern and relative proportion of the soils or miscellaneous areas are somewhat similar. Alpha-Beta association, 0 to 2 percent slopes, is an example.

An *undifferentiated group* is made up of two or more soils or miscellaneous areas that could be mapped individually but are mapped as one unit because similar interpretations can be made for use and management. The pattern and proportion of the soils or miscellaneous areas in a mapped area are not uniform. An area can be made up of only one of the major soils or miscellaneous areas, or it can be made up of all of them. Alpha and Beta soils, 0 to 2 percent slopes, is an example.

Some surveys include *miscellaneous areas*. Such areas have little or no soil material and support little or no vegetation. Rock outcrop is an example.

Washington County, Oregon

9—Chehalis silty clay loam, occasional overflow

Map Unit Setting

National map unit symbol: 220v
Elevation: 100 to 300 feet
Mean annual precipitation: 40 to 60 inches
Mean annual air temperature: 52 to 54 degrees F
Frost-free period: 165 to 210 days
Farmland classification: All areas are prime farmland

Map Unit Composition

Chehalis, occasional flooding, and similar soils: 85 percent
Minor components: 4 percent
Estimates are based on observations, descriptions, and transects of the mapunit.

Description of Chehalis, Occasional Flooding

Setting

Landform: Flood plains
Landform position (three-dimensional): Tread
Down-slope shape: Linear
Across-slope shape: Linear
Parent material: Mixed alluvium

Typical profile

H1 - 0 to 16 inches: silty clay loam
H2 - 16 to 45 inches: silty clay loam
H3 - 45 to 60 inches: silt loam

Properties and qualities

Slope: 0 to 3 percent
Depth to restrictive feature: More than 80 inches
Drainage class: Well drained
Capacity of the most limiting layer to transmit water (Ksat): Moderately high to high
(0.57 to 1.98 in/hr)
Depth to water table: More than 80 inches
Frequency of flooding: OccasionalNone
Frequency of ponding: None
Available water supply, 0 to 60 inches: High (about 11.5 inches)

Interpretive groups

Land capability classification (irrigated): 2w
Land capability classification (nonirrigated): 2w
Hydrologic Soil Group: B
Ecological site: F002XC003OR - Low Floodplain Group
Forage suitability group: Well drained < 15% Slopes (G002XY002OR)
Other vegetative classification: Well drained < 15% Slopes (G002XY002OR)
Hydric soil rating: No

Minor Components

Wapato

Percent of map unit: 4 percent
Landform: Flood plains

Custom Soil Resource Report

Landform position (three-dimensional): Tread
Down-slope shape: Linear
Across-slope shape: Linear
Other vegetative classification: Poorly Drained (G002XY006OR)
Hydric soil rating: Yes

45A—Woodburn silt loam, 0 to 3 percent slopes

Map Unit Setting

National map unit symbol: 2208
Elevation: 150 to 400 feet
Mean annual precipitation: 40 to 50 inches
Mean annual air temperature: 50 to 54 degrees F
Frost-free period: 165 to 210 days
Farmland classification: All areas are prime farmland

Map Unit Composition

Woodburn and similar soils: 85 percent
Minor components: 1 percent
Estimates are based on observations, descriptions, and transects of the mapunit.

Description of Woodburn

Setting

Landform: Terraces
Landform position (three-dimensional): Tread
Down-slope shape: Linear
Across-slope shape: Linear
Parent material: Old alluvium

Typical profile

H1 - 0 to 16 inches: silt loam
H2 - 16 to 31 inches: silty clay loam
H3 - 31 to 60 inches: silt loam

Properties and qualities

Slope: 0 to 3 percent
Depth to restrictive feature: More than 80 inches
Drainage class: Moderately well drained
Capacity of the most limiting layer to transmit water (Ksat): Moderately low to moderately high (0.06 to 0.20 in/hr)
Depth to water table: About 25 to 32 inches
Frequency of flooding: None
Frequency of ponding: None
Available water supply, 0 to 60 inches: High (about 12.0 inches)

Interpretive groups

Land capability classification (irrigated): 2w
Land capability classification (nonirrigated): 2w
Hydrologic Soil Group: C
Ecological site: R002XC008OR - Valley Terrace Group

Custom Soil Resource Report

Forage suitability group: Moderately Well Drained < 15% Slopes (G002XY004OR)

Other vegetative classification: Moderately Well Drained < 15% Slopes
(G002XY004OR)

Hydric soil rating: No

Minor Components

Dayton

Percent of map unit: 1 percent

Landform: Terraces

Landform position (three-dimensional): Tread

Down-slope shape: Linear

Across-slope shape: Linear

Other vegetative classification: Poorly Drained (G002XY006OR)

Hydric soil rating: Yes

45B—Woodburn silt loam, 3 to 7 percent slopes

Map Unit Setting

National map unit symbol: 2209

Elevation: 150 to 400 feet

Mean annual precipitation: 40 to 50 inches

Mean annual air temperature: 50 to 54 degrees F

Frost-free period: 165 to 210 days

Farmland classification: All areas are prime farmland

Map Unit Composition

Woodburn and similar soils: 85 percent

Minor components: 1 percent

Estimates are based on observations, descriptions, and transects of the mapunit.

Description of Woodburn

Setting

Landform: Terraces

Landform position (three-dimensional): Tread

Down-slope shape: Linear

Across-slope shape: Linear

Parent material: Old alluvium

Typical profile

H1 - 0 to 16 inches: silt loam

H2 - 16 to 31 inches: silty clay loam

H3 - 31 to 60 inches: silt loam

Properties and qualities

Slope: 3 to 7 percent

Depth to restrictive feature: More than 80 inches

Drainage class: Moderately well drained

Capacity of the most limiting layer to transmit water (Ksat): Moderately low to moderately high (0.06 to 0.20 in/hr)

Custom Soil Resource Report

Depth to water table: About 25 to 32 inches
Frequency of flooding: None
Frequency of ponding: None
Available water supply, 0 to 60 inches: High (about 12.0 inches)

Interpretive groups

Land capability classification (irrigated): 2e
Land capability classification (nonirrigated): 2e
Hydrologic Soil Group: C
Ecological site: R002XC008OR - Valley Terrace Group
Forage suitability group: Moderately Well Drained < 15% Slopes (G002XY004OR)
Other vegetative classification: Moderately Well Drained < 15% Slopes (G002XY004OR)
Hydric soil rating: No

Minor Components

Dayton

Percent of map unit: 1 percent
Landform: Terraces
Landform position (three-dimensional): Tread
Down-slope shape: Linear
Across-slope shape: Linear
Other vegetative classification: Poorly Drained (G002XY006OR)
Hydric soil rating: Yes

2027A—Verboort silty clay loam, 0 to 3 percent slopes

Map Unit Setting

National map unit symbol: 2mj15
Elevation: 150 to 300 feet
Mean annual precipitation: 40 to 50 inches
Mean annual air temperature: 50 to 54 degrees F
Frost-free period: 165 to 210 days
Farmland classification: Farmland of statewide importance

Map Unit Composition

Verboort and similar soils: 94 percent
Minor components: 5 percent
Estimates are based on observations, descriptions, and transects of the mapunit.

Description of Verboort

Setting

Landform: Flood plains on terraces
Landform position (three-dimensional): Tread
Down-slope shape: Linear
Across-slope shape: Concave
Parent material: Loamy alluvium over silty and clayey glaciolacustrine deposits

Custom Soil Resource Report

Typical profile

Ap - 0 to 8 inches: silty clay loam
A - 8 to 12 inches: silty clay loam
E - 12 to 19 inches: silty clay loam
2Btg - 19 to 28 inches: clay
2BCtg - 28 to 33 inches: silty clay
2Cg - 33 to 60 inches: silty clay loam

Properties and qualities

Slope: 0 to 3 percent
Depth to restrictive feature: 16 to 26 inches to abrupt textural change
Drainage class: Poorly drained
Capacity of the most limiting layer to transmit water (Ksat): Very low to moderately low (0.00 to 0.06 in/hr)
Depth to water table: About 0 to 8 inches
Frequency of flooding: NoneFrequent
Frequency of ponding: Frequent
Available water supply, 0 to 60 inches: Low (about 4.1 inches)

Interpretive groups

Land capability classification (irrigated): 3w
Land capability classification (nonirrigated): 3w
Hydrologic Soil Group: D
Ecological site: R002XC007OR - Valley Swale Group
Forage suitability group: Poorly Drained (G002XY006OR)
Other vegetative classification: Poorly Drained (G002XY006OR)
Hydric soil rating: Yes

Minor Components

Waldo

Percent of map unit: 5 percent
Landform: Flood plains
Landform position (three-dimensional): Tread
Down-slope shape: Linear
Across-slope shape: Concave
Other vegetative classification: Poorly Drained (G002XY006OR)
Hydric soil rating: Yes