

# Island Springs Hatchery

**6.9 Acres with Beautiful Home and 10 Spectacular Ponds**



17225 NW Lucy Reeder Rd. Portland, Oregon

**\$1,199,000.**



- 6.9 Acres on Fabulous Sauvie Island in the Columbia River
- Beautiful 2900+ SF Home overlooking 10 Ponds
  - 3 Bedroom, 3 Bath plus Family Room, Workshop & Deck
  - Spacious Kitchen with Oak Cabinets & Tile Counters
  - Great Room with Vaulted Ceilings and Hardwood Floors
- Quality Fish Hatchery Business providing “stocker fish” for lakes and ponds throughout Oregon & Washington
- 10 vinyl-lined Ponds with elaborate fresh water circulation and aeration system
- 4 wells and water rights; Perimeter fencing
- 40 X 48 Shop with Diesel Generator and 14 X 26 lean-to
- 24 X 18 Hatchery House with Tanks; 10 X 20 Mechanical Bldg
- Meticulous landscaping and fruit trees
- Room for expansion with infrastructure stubbed-in for additional ponds
- Hatchery business equipment and 5500 GMC Duramax delivery truck included (Equipment List Available)
- Multnomah County– Tax Lot 900, Section 6, T2N, R1W, WM
- Annual Taxes– approximately \$4403.85(tax deferral)
- Realtors Multiple Listing System #12353956
- Shown by Appointment Only! Please contact Listing Broker

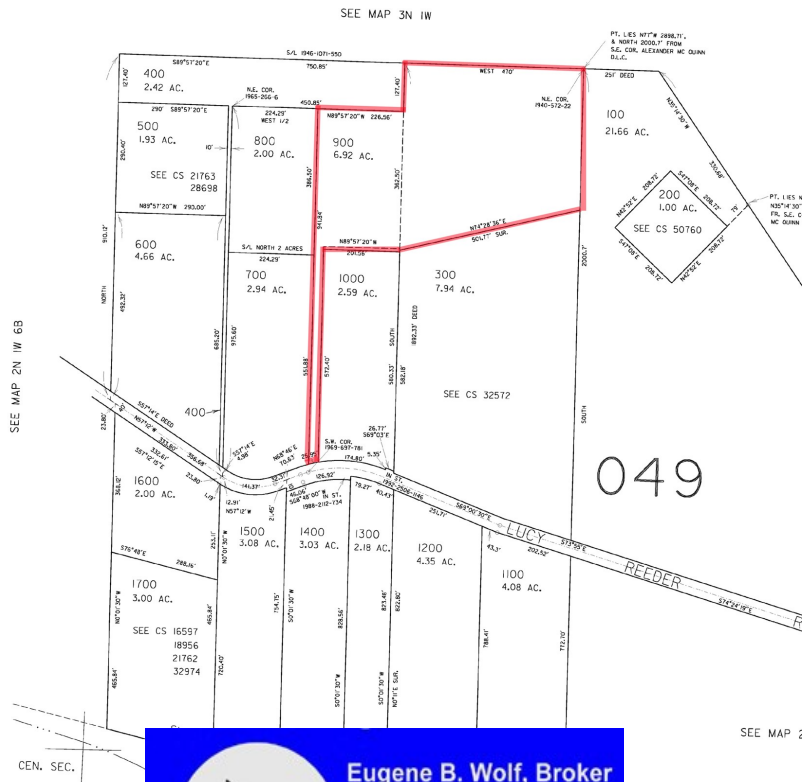


Information Contained Herein from Sources Deemed  
Reliable, But Not Guaranteed

Eugene B. Wolf, Broker  
(503) 682-1789 (Office)  
(503) 704-5262 (Cellular)  
[www.wolfnw.com](http://www.wolfnw.com)

**WOLF NW Properties, Inc.**  
30003 SW 35th Dr. Wilsonville, Oregon 97070

# Island Springs Hatchery



**Eugene B. Wolf, Broker**  
 (503) 682-1789 (Office)  
 (503) 704-5262 (Cellular)  
[www.wolfnw.com](http://www.wolfnw.com)

**WOLF NW Properties, Inc.**  
 30003 SW 35th Dr. Wilsonville, Oregon 97070