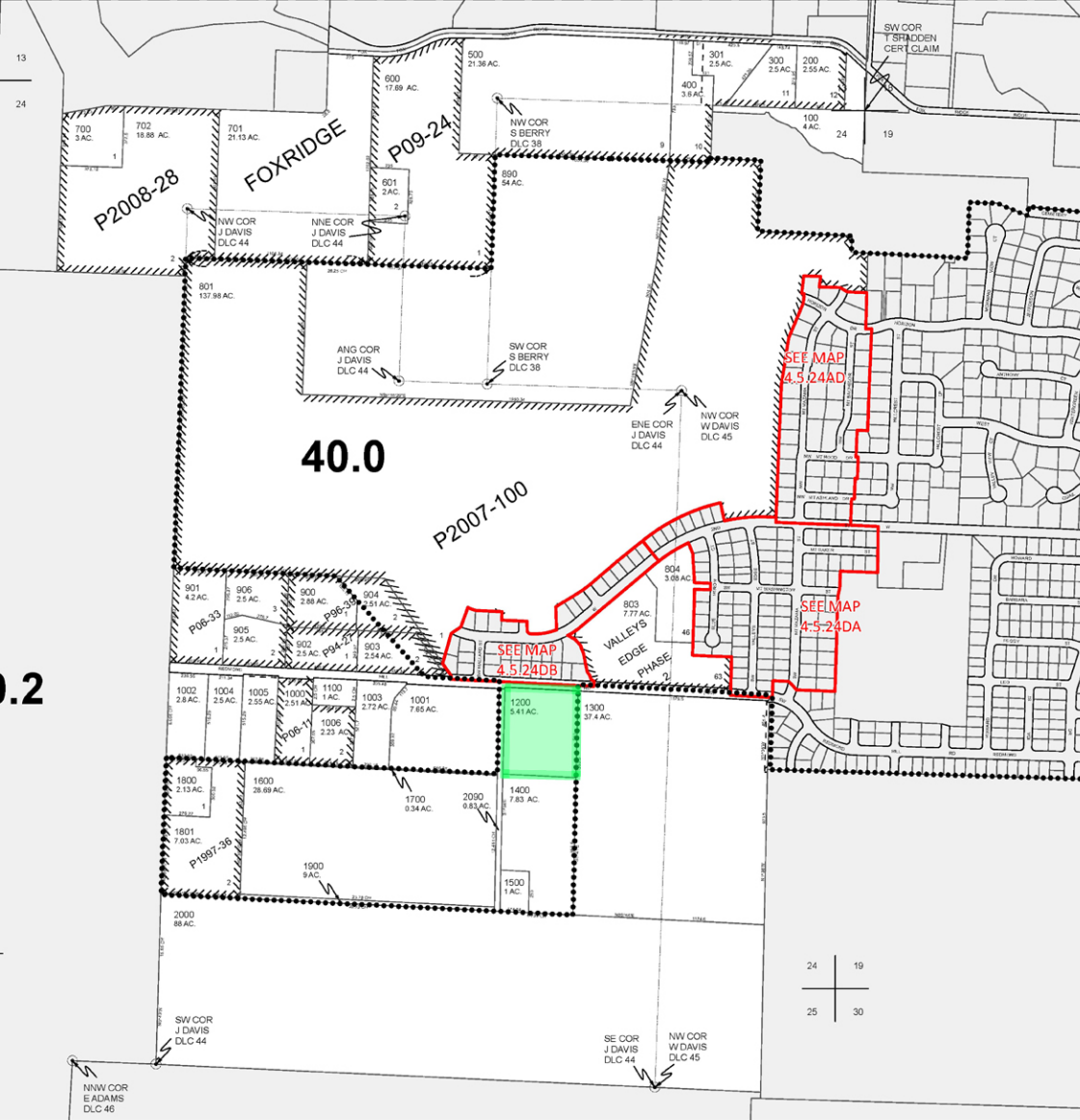




ASSESSMENT & TAX  
CARTOGRAPHY

SECTION 24 T.4S. R.5W. W.M.  
YAMHILL COUNTY OREGON  
1" = 400'



CANCELLED TAXLOTS:  
800  
00802

DATE PRINTED: 10/22/2014

This product is for Assessment and Taxation (A&T) purposes only and has not been prepared or is suitable for legal, engineering, surveying or any purposes other than assessment and taxation.