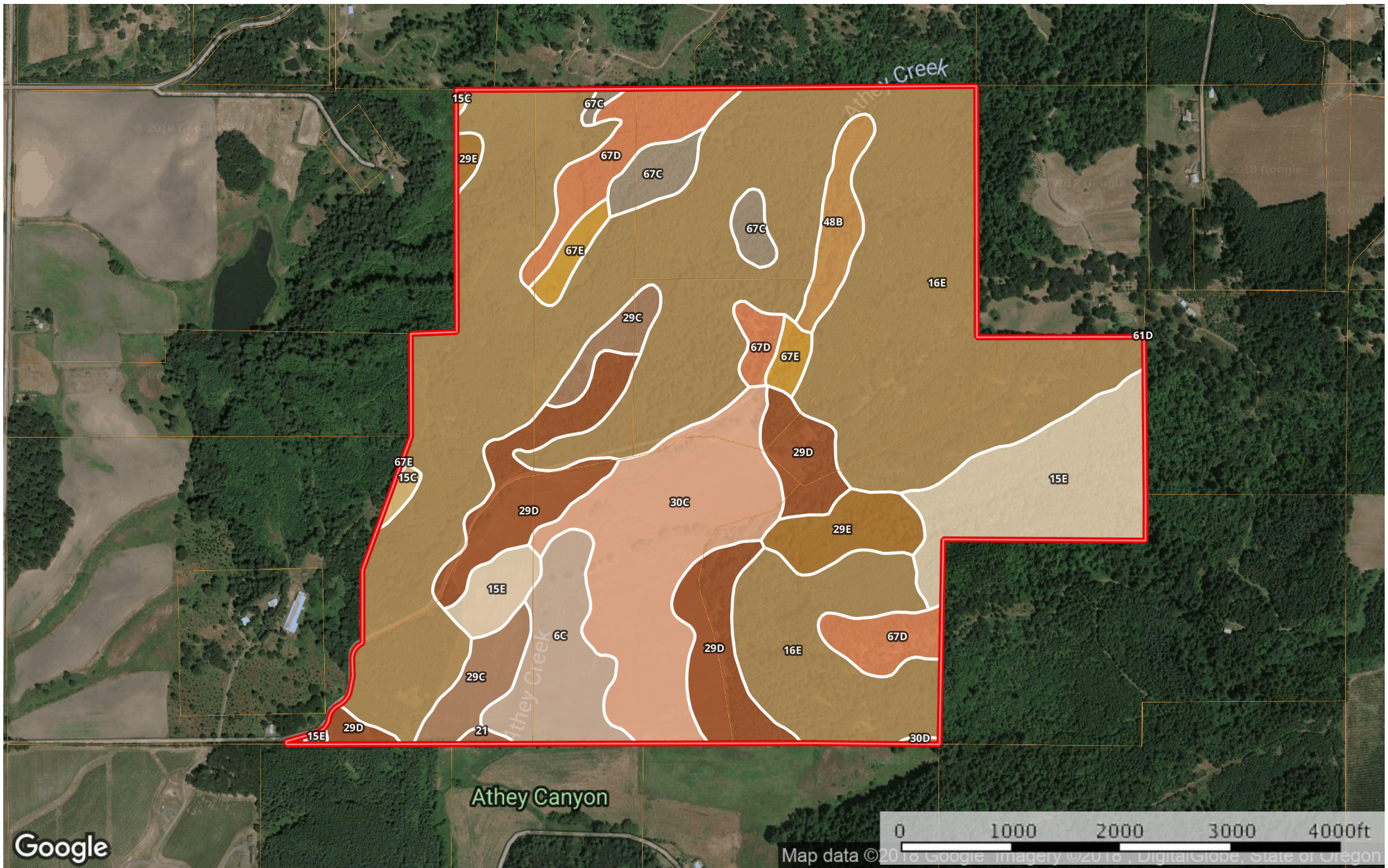



8710 North Oak Grove Rickreall Oregon, AC +/-



 Boundary









|  Boundary 382.0 ac

SOIL CODE	SOIL DESCRIPTION	ACRES	%	CAP
16E	Chehulpum-Steiwer complex, 12 to 40 percent slopes	206.4	54.03	6e
61D	Ritner gravelly silty clay loam, 12 to 30 percent slopes	0.0	0.0	6s
15E	Chehulpum silt loam, 12 to 40 percent slopes	30.1	7.87	6e
67E	Steiwer silt loam, 20 to 50 percent slopes	4.8	1.26	6e
29D	Hazelair silt loam, 12 to 20 percent slopes	34.2	8.96	4e
67C	Steiwer silt loam, 3 to 12 percent slopes	7.0	1.84	3e
30C	Helmick silt loam, 3 to 12 percent slopes	37.7	9.86	-
67D	Steiwer silt loam, 12 to 20 percent slopes	18.5	4.83	4e
15C	Chehulpum silt loam, 3 to 12 percent slopes	1.2	0.33	6e
29E	Hazelair silt loam, 20 to 30 percent slopes	9.1	2.39	4e
21	Cove silty clay loam	0.6	0.16	4w
30D	Helmick silt loam, 12 to 20 percent slopes	0.2	0.06	4e
48B	McAlpin silty clay loam, 3 to 6 percent slopes	6.3	1.66	2e
29C	Hazelair silt loam, 3 to 12 percent slopes	10.3	2.7	4e
6C	Bashaw silty clay, 3 to 12 percent slopes	15.6	4.07	4w
TOTALS		382.0	100%	4.82

Capability Legend

Increased Limitations and Hazards

Decreased Adaptability and Freedom of Choice Users

Land, Capability Class(non-irrigated)								
	1	2	3	4	5	6	7	8
'Wild Life'	•	•	•	•	•	•	•	•
Forestry	•	•	•	•	•	•	•	
Limited	•	•	•	•	•	•	•	
Moderate	•	•	•	•	•	•		
Intense	•	•	•	•	•			
Limited	•	•	•	•				
Moderate	•	•	•					
Intense	•	•						
Very Intense	•							

Grazing Cultivation

(c) climatic limitations (e) susceptibility to erosion

(s) soil limitations within the rooting zone (w) excess of water