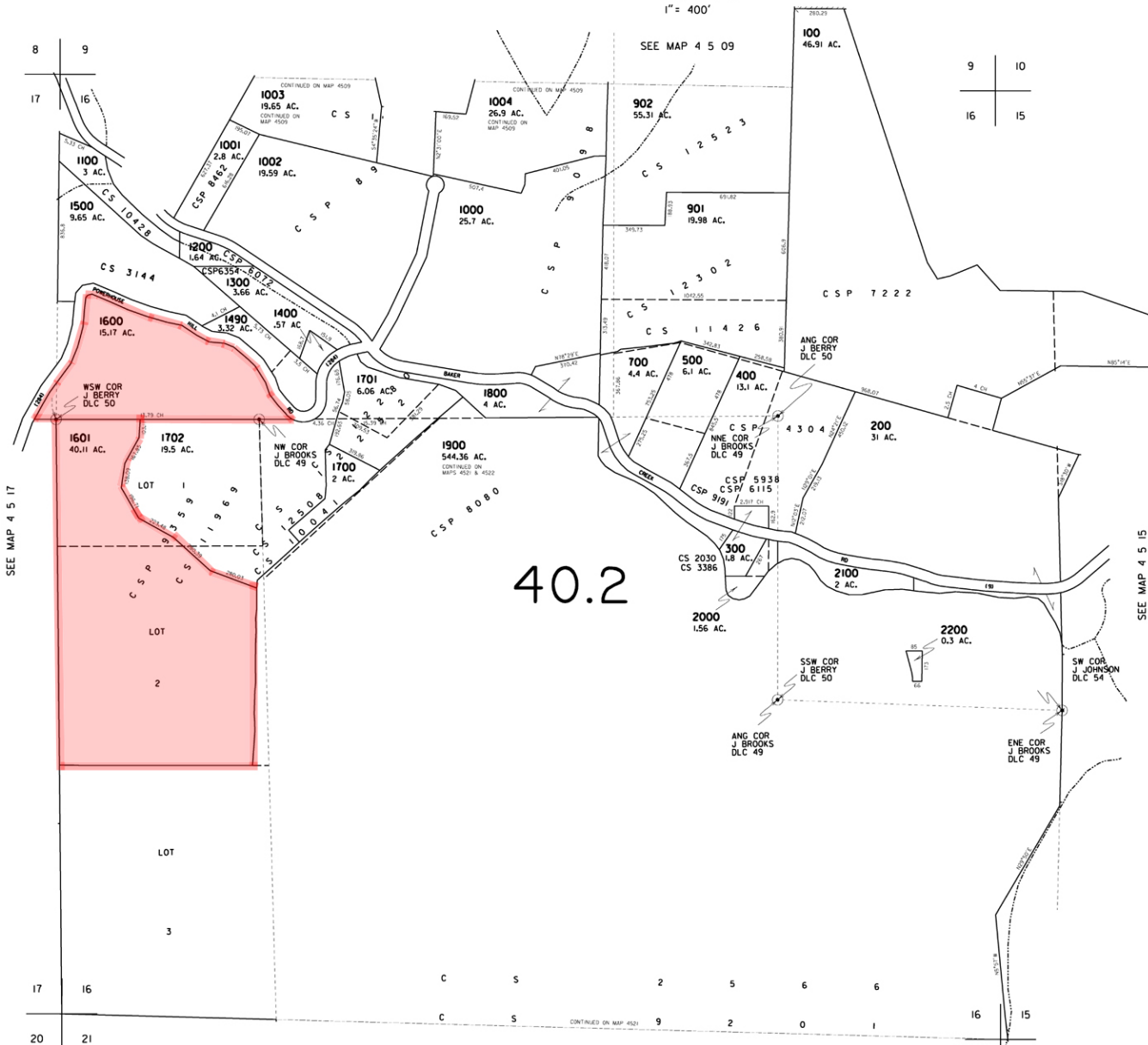


SECTION 16 T4S R5W W.M.
YAMHILL COUNTY

1" = 400'



40.2

SEE MAP 4 5 17

SEE MAP 4 5 15

9 | 10
16 | 15

17	16								
20	21	C	S	2	5	6	6	16	15
		C	S	9	2	0	1		

CONTINUED ON MAP 4521

21 | 22