

40 Acres Eola-Amity Hills AVA

Fabulous Views, Vineyard Potential, Cherry Orchard



3290 Brush College NW Salem, Oregon 97304

\$749,000.

- 40 +/- Acres with Home and Cherry Orchard
- Fabulous "Top of the Hill" Views
- Located in the Eola-Amity Hills AVA
- 1920 Remodeled 3-Bedroom, 2-Bath Home
- 32 X 60 Machine Shed, 45 X 60 Hay Barn and other outbuildings
- Cherry Orchard– including Bada, Royal Anne, Van, Lapin & Sweetheart varieties
- Hay/ Dry Cropground and Timbered Areas
- Spectacular Building Site with Gravel Road In
- Vineyard Soils (Jory and Nekia)
- Property Well Suited for a Vineyard
- Polk County– Tax Lot 400, Section 6, T7S, R3W, W.M.
- Taxes are approximately \$1,342.75 annually
- RMLS #13445949

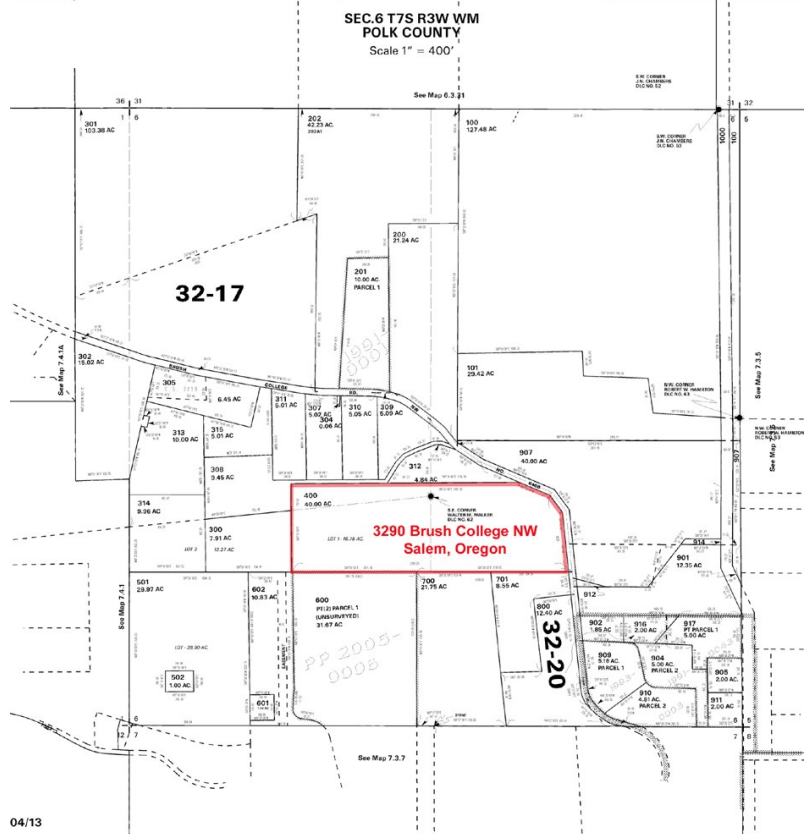


Eugene B. Wolf, Broker
(503) 682-1789 (Office)
(503) 704-5262 (Cellular)
www.wolfnw.com

WOLF NW Properties, Inc.
30003 SW 35th Dr. Wilsonville, Oregon 97070

Information Contained Herein from Sources Deemed Reliable, But Not Guaranteed

3290 Brush College NW Salem, OR



Eugene B. Wolf, Broker
(503) 682-1789 (Office)
(503) 704-5262 (Cellular)
www.wolfnw.com

WOLF NW Properties, Inc.
30003 SW 35th Dr. Wilsonville, Oregon 97070