



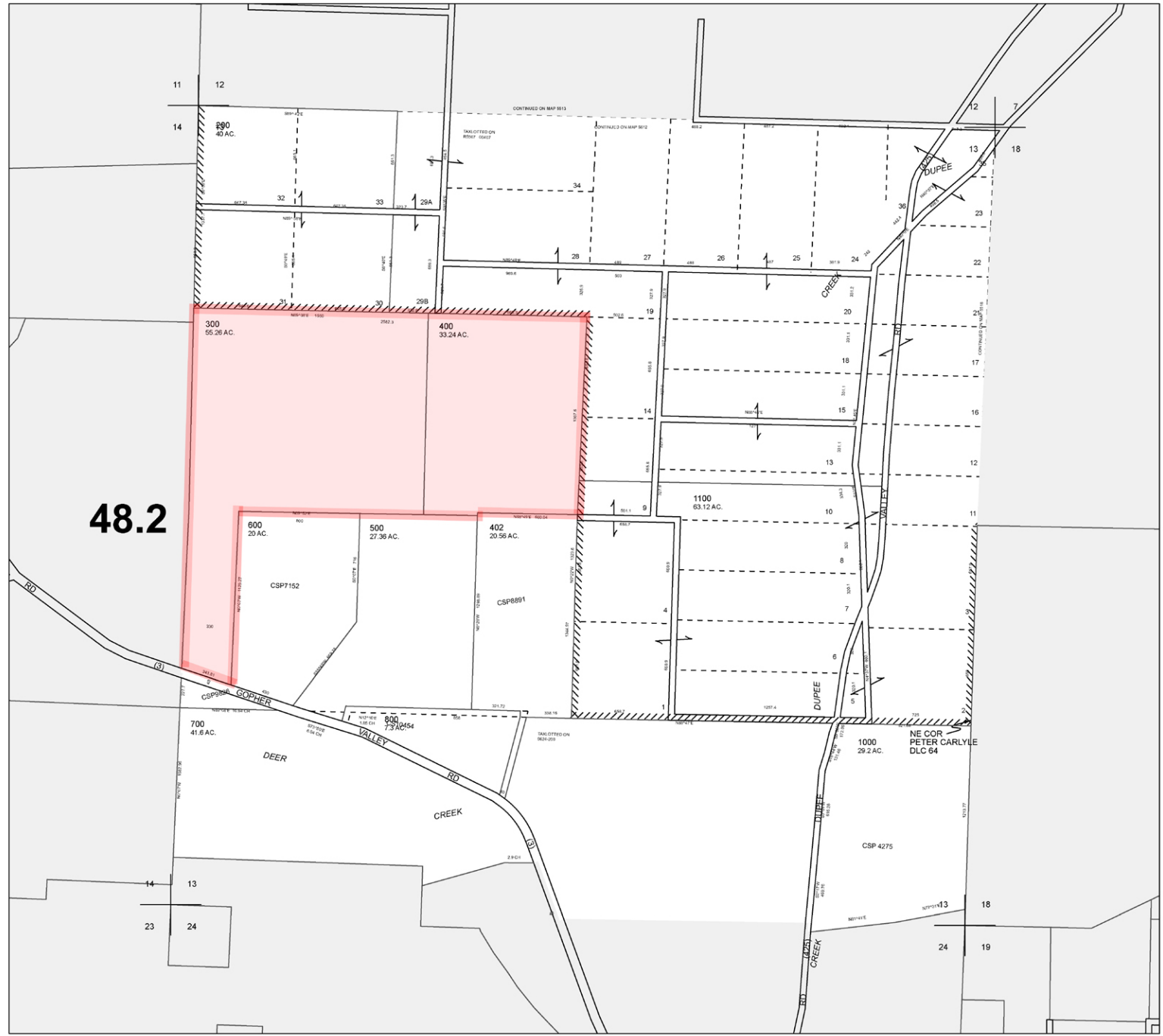
ASSESSMENT & TAX  
CARTOGRAPHY

SECTION 13 T.5S. R.6W. W.M.  
YAMHILL COUNTY OREGON  
1" = 400'

CANCELLED TAXLOTS:  
1200  
02900  
403  
401  
00100  
00801

DATE PRINTED: 1/5/2015

This product is for Assessment and Taxation (A&T) purposes only and has not been prepared or is suitable for legal, engineering, surveying or any purposes other than assessment and taxation.



48.2